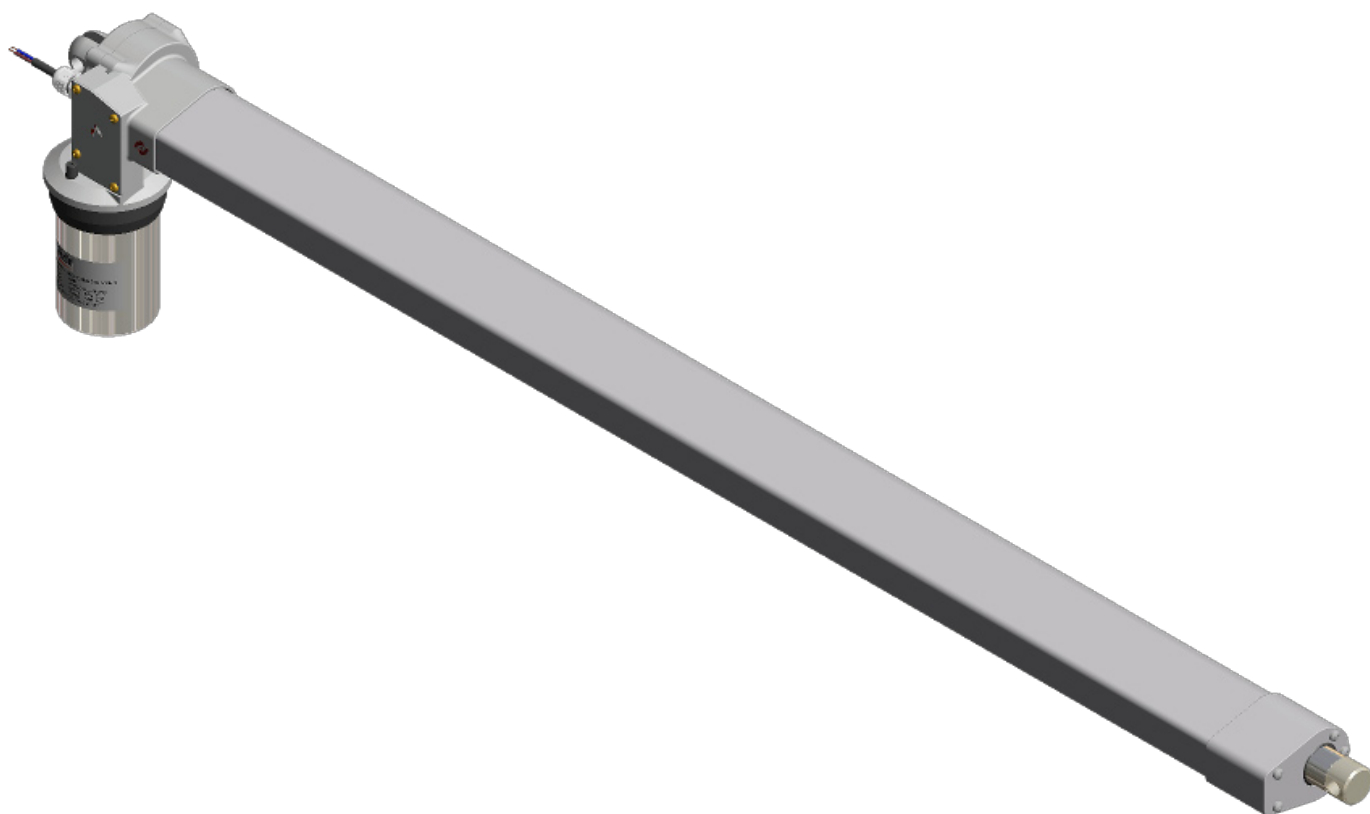




Litex AB
Sporregatan 25
SE-21377 Malmö

Tel. 040-214120
info@litex.se
www.litex.se

ALI3-IM



I(')M...THE NEW MECVEL LINEAR ACTUATOR: ENERGY, FORCE AND POWER IN YOUR PALM

A new product with integrated micro switches, wired and fixes, designed and manufactured entirely in Italy.

Now with stroke up to 800 mm.

Since 1987 MecVel develops and manufactures a wide range of AC and DC linear actuators entirely Made in Italy, constantly updated according to market requests, designed and customized in order to meet each customer need. By virtue of years of experience and technical knowledge MecVel is able to offer complete solutions for all sorts of applications, also thanks to the important role of the new technologies applied.

MecVel gives shape to an innovative product, starting from its extreme immediacy and ease of use, developed to improve and make unmatched each experience of handling.

ALI3 IM, in fact, responds to each need of linear movements up to 600 kg, with no specific restrictions in relation to the application: from automation to packaging, from food to aeronautic branch, from wind system to the photovoltaic one, with particular attention to the medical field, due to its capability to match high performance with flexibility and silence. It will be simply required to establish the stroke needed to have a product already complete and ready to work.

Moreover limit switches with diodes makes the connection, and then the flow of electrical current, very fast and easy.

The electric system proposed by MecVel, in fact, offer excellent performance compared to pneumatic and hydraulic systems: it has easy and essential connections, eliminates the presence of pumps, valves and pipes, excluding the risk of contamination due to oil leaks, provides power only when required, gives the possibility to arrest the stroke in intermediate positions and works with high temperatures, dust and vibrations with minimum noise, low wear and low maintenance.

Being made ad hoc in each part, in order to maximize the functionality and exploit all the strength and power, the product offers a defined number of customization options: this allows having extremely rapid assembly times, together with delivery times.

Similarly, the stock of this product with strokes of 200/400 mm makes it suitable for different solutions, and especially always ready for use, placing ALI3 IM as a real passe-partout.

Advantages

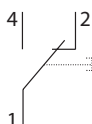
- Stroke up to 800 mm (step of 50 mm)
- Immediacy and ease of use
- Fast and easy connection
- Robustness: load (in push or pull) up to 6.000 N
- Versatility
- IP65 and CE marked
- Integrated micro switches

Technical features

- 90° DC motor, 12-24 V
- Worm gearbox
- Trapezoidal screw
- Load (in push or pull) up to 6.000 N
- Speed up to 60 mm/s
- Anti-rotation device
- Push rod in stainless steel (on request)
- Encoder on request

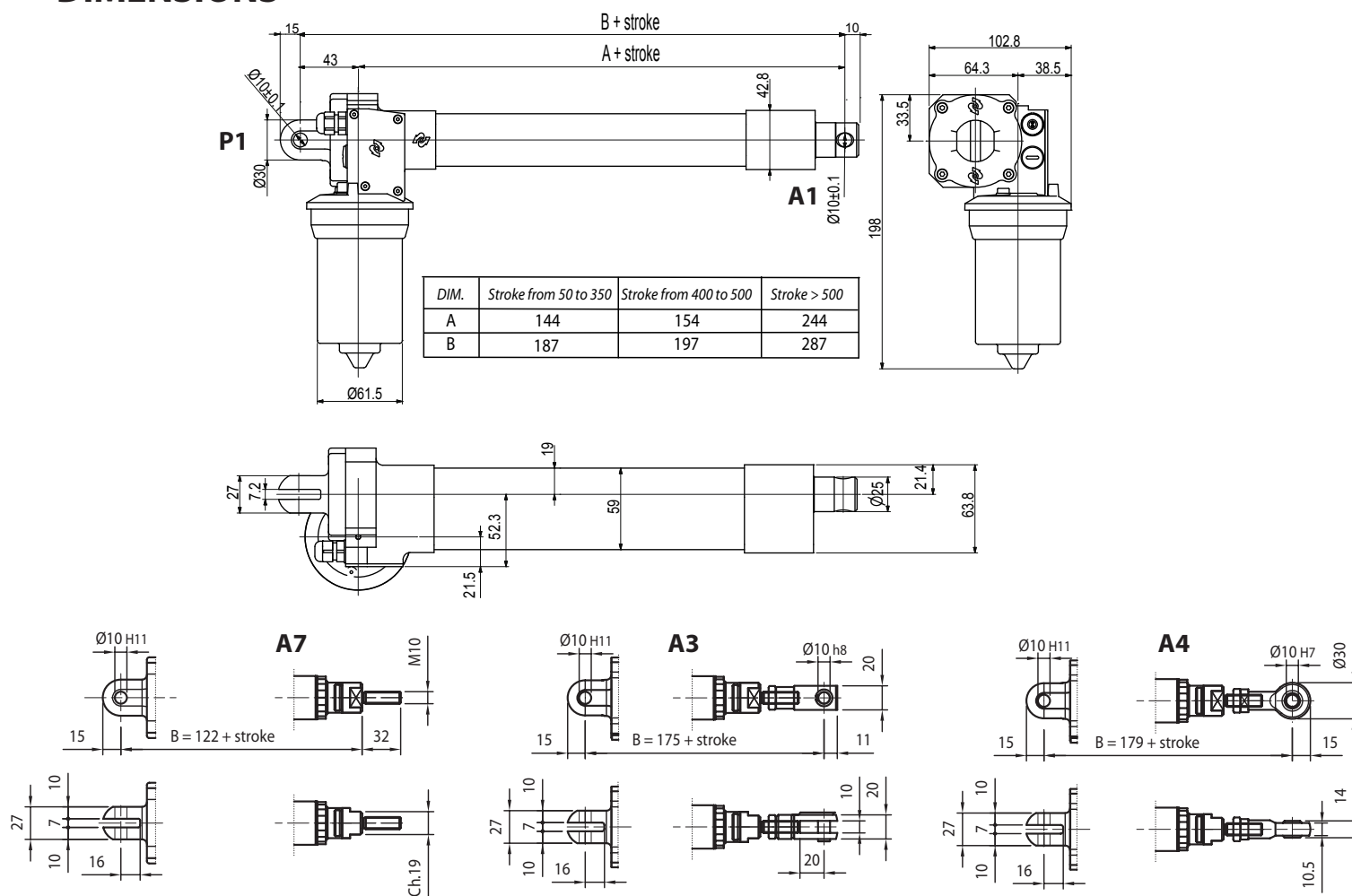
Limit switches

- Housing: phoenolic-melamine thermosetting
- Mechanism: snap-action coil spring mechanism with beryllium/bronze spring. Changeover contact, normally-closed/normally-open
- Contacts: fine silver
- Terminals: gold flashed
- Mechanical life: 3×10^5 (XGG) cycles minimum (impact free actuation)



Performance	XCF type	XGG type (on request)
Voltage	250 Vac	230 Vac/30 Vdc
Resistive load	10 A	16 A
Motor load	2 A	6 A

DIMENSIONS



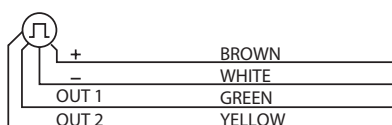
Note: "B" dimension changes according to model

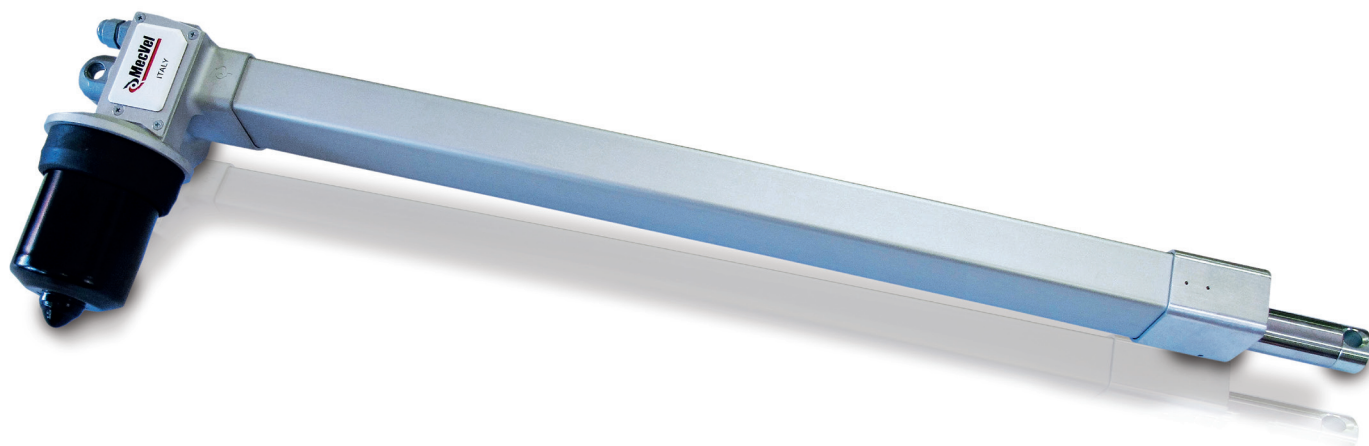
Stroke from 50 to 350 = see pics
Stroke from 400 to 500 = +10 mm
Stroke > 500 = +100 mm

AL13-IM (VDC)						
<i>Fmax</i> (N)	<i>Speed</i> (mm/s)	<i>Version</i>	<i>Motor size</i>	<i>Motor power</i> (KW)	<i>Motor speed</i> (rpm)	<i>Max current for Fmax(A)</i> 24Vdc
1200	60	M01	61.5	-	5000	11
3000	35	M03	61.5	-	5000	13
3600	25	M04	61.5	-	5000	10
6000	12	M06	61.5	-	5000	11
6000	5	M08	61.5	-	5000	5,8

Encoder E01 (on request)

- Power supply 5 Vdc...24 Vdc
- NPN open collector
- Max output current: 100mA






ORDERING KEY

ALI3-IM / 0200 / M01 / CC-024-61.5-5000 / M0 / E01 / P1 / A1 / G / DIS

MODEL: _____	_____	_____	_____	_____	_____	_____	_____	_____	_____
ALI3-IM/ALI3-IM-VRS									
STROKE (mm): _____	_____	_____	_____	_____	_____	_____	_____	_____	_____
es. 200 mm = 0200									
VERSION: _____	_____	_____	_____	_____	_____	_____	_____	_____	_____
M01/M03/M05/M06/M08									
MOTOR (version, voltage, size, rpm): _____	_____	_____	_____	_____	_____	_____	_____	_____	_____
MOTOR POSITION (standard): _____	_____	_____	_____	_____	_____	_____	_____	_____	_____
ENCODER (if not required, leave blank in the ordering key): _____	_____	_____	_____	_____	_____	_____	_____	_____	_____
REAR END: _____	_____	_____	_____	_____	_____	_____	_____	_____	_____
P1: standard								P2: eyelet 90°	
FRONT END: _____	_____	_____	_____	_____	_____	_____	_____	_____	_____
A1: standard								A4: rod end	
A3: yoke + clip								A7: M10 male	
OPTIONS: _____	_____	_____	_____	_____	_____	_____	_____	_____	_____
G: safety nut									
MB: CC motor brake									
VARIANTS: _____	_____	_____	_____	_____	_____	_____	_____	_____	_____
n.° drawing									

 MecVel reserves the right to change products information and/or features without notice; all data contained in this catalogue are purely indicative and not binding for the company.