

FL

## FL SERIES

Variety of chain type suitable for wide range of applications either horizontal or vertically product transportation. Capacity higher than FK, FS, FM. The maximum product width to be conveyed can be referred to guide rail assembly pages.

### FL Series Characteristic

Beam Width: 150mm

Product Width: Refer to Guide Rail Assembly

### Accessories Needed

Slide Rail Required: FASR-25 OR FASR-25U

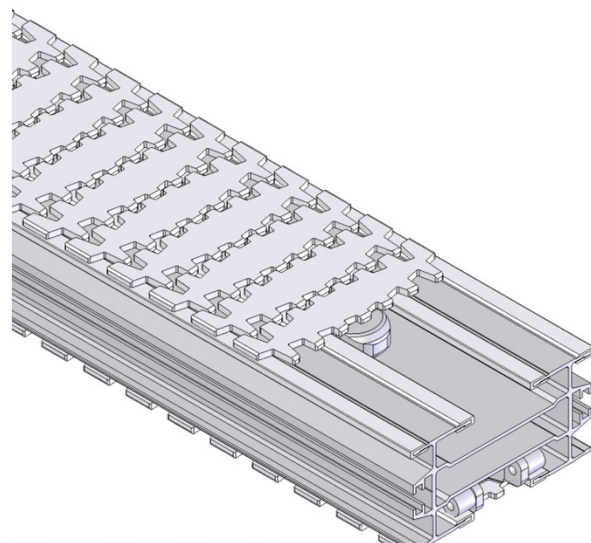
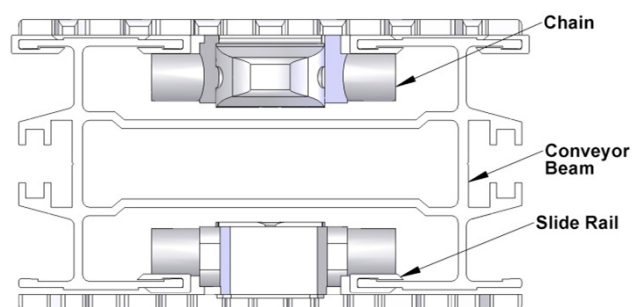
Slide Rail Colour: WHITE OR NATURAL COLOUR

Slide Rail Material: HDPE OR UHMW

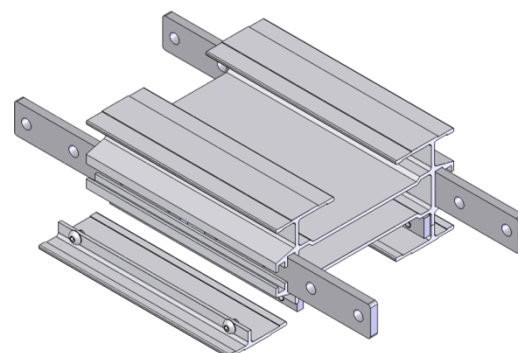
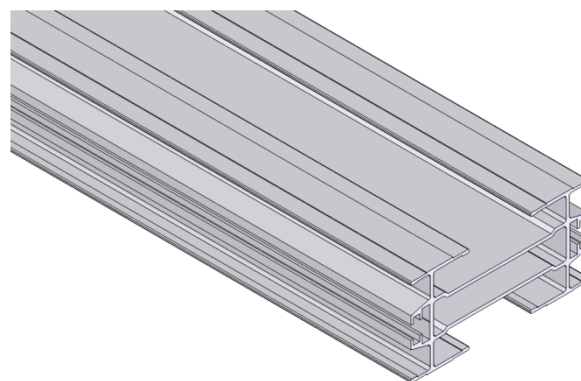
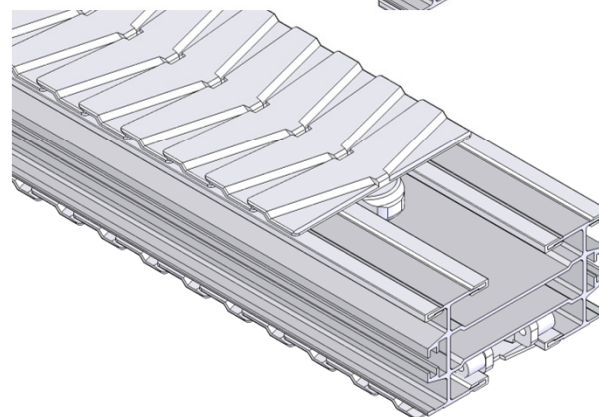
Slide Rail Rivet & Screw: FASLR-4X6 or FASLS-M5

Connecting strip is used to connect 2 beams.

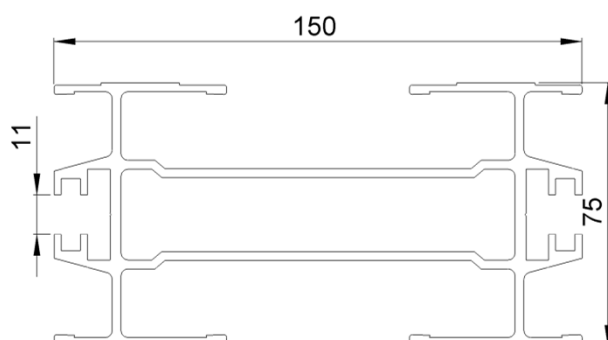
Connecting Strip: FACS-25x140A



FL

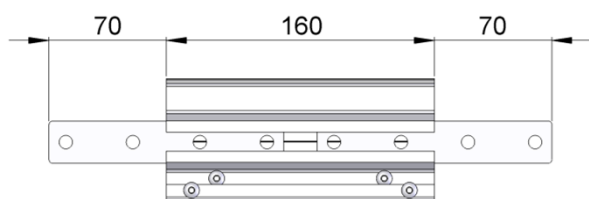


Conveyor Beam **FLCB-3**



UOM : 3 Meter / Length

Chain Connecting Module **FLCC-160**



UOM: pc

## FL SERIES

### Chain Common Data

Packaging: 5m per box  
Pitch: 35.5mm  
Width: 150mm  
Tensile Strength at 20°C: 6000N  
Colour: White & Black (Conductive)

Material :-

Chain: White Acetal / POM

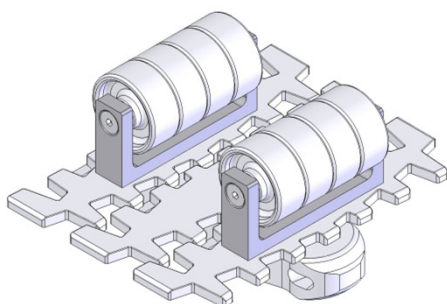
Pivot: Polyamide

Pivot Pin : Stainless Steel

Insert (Wedge & Friction): TPE Grey

### Example for FLRC-5B-L#

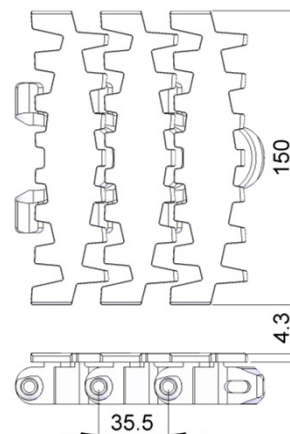
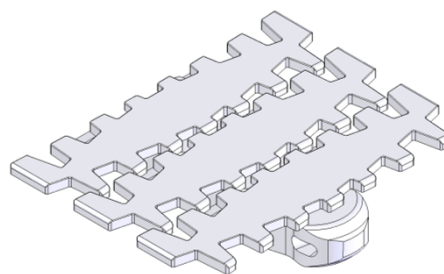
# = 1 cleated top chain with alternate of #



The above chain is FLRC-5B-L1, 1 link cleated top chain with alternate of 1 link of plain chain.

Note: # = 1, 2, 3, 4, 5.....20

### Standard Plain Chain FLPC-5

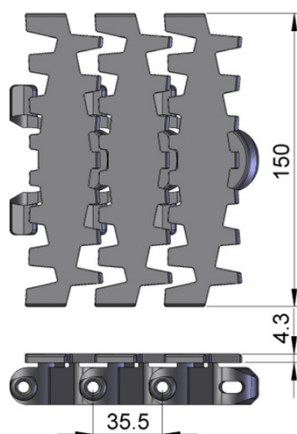
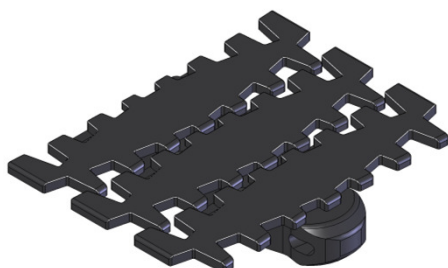


UOM: 5 Meter / box

Application: Suitable for horizontal and slope < 5° transport of products with accumulation.

FL

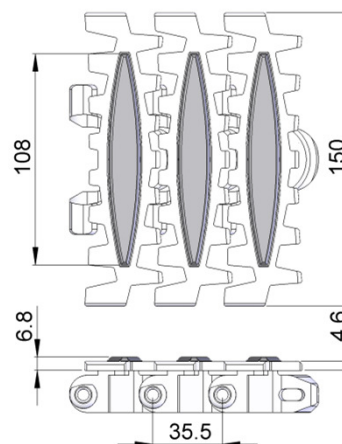
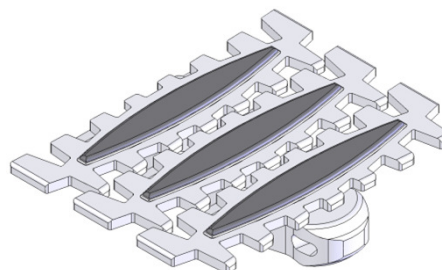
### Conductive Chain FLPC-5CD



UOM: 5 Meter / box

Application: Suitable for transport of static sensitive product.

### Friction Top Chain FLFT-5

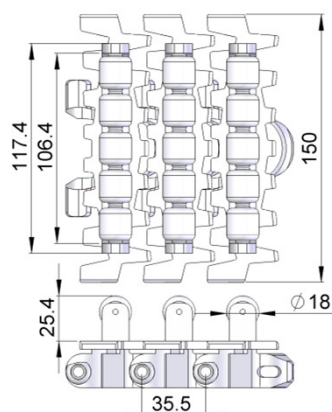
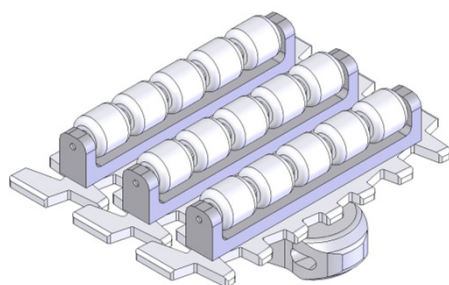


UOM: 5 Meter / box

Application: Suitable for transport product in slope > 5° but <= 30° without accumulation.

**FL SERIES**

**Roller Top Chain FLRT-5**

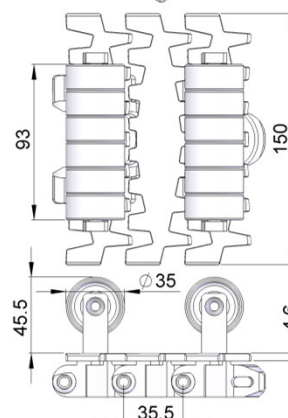
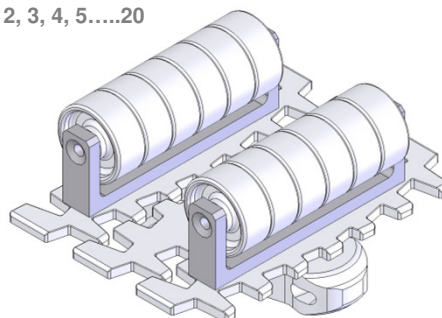


UOM: 5 Meter / box

Application: Suitable for accumulation of product with low friction and pressure.

**Roller Cleat Chain FLRC-5A-L#**

# = 1, 2, 3, 4, 5.....20



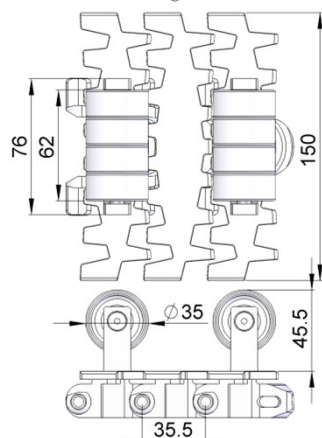
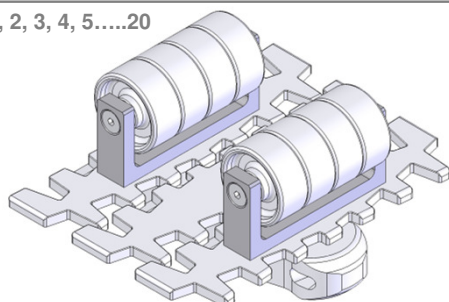
UOM: 5 Meter / box

Application: Suitable for vertical transportation of product in slope with no accumulation.

FL

**Roller Cleat Chain FLRC-5B-L#**

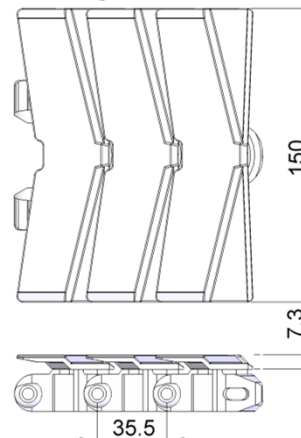
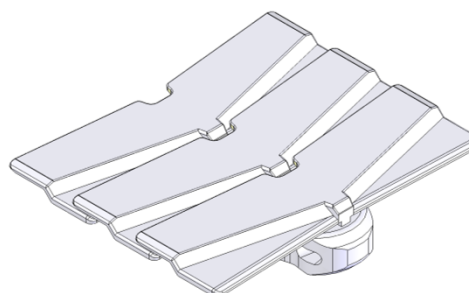
# = 1, 2, 3, 4, 5.....20



UOM: 5 Meter / box

Application: Suitable for vertical transportation of product in slope with no accumulation.

**Standard Plain Chain-V FLPC-5V**

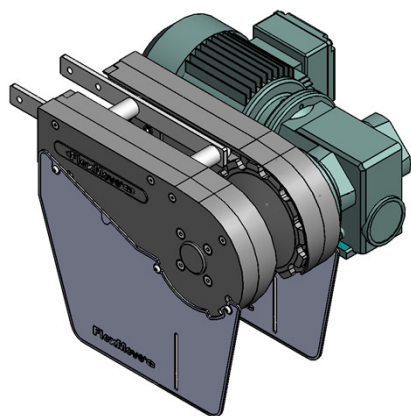


UOM: 5 METER/BOX

Application: (Safety Chain) Suitable for horizontal and slope < 5° transport of products with accumulation.

# FL SERIES

FL Direct End Drive with Motor (LEFT)  
**FLDD-0.25L1, 0.37L1, 0.55L1**



Max Traction Force : 1250N

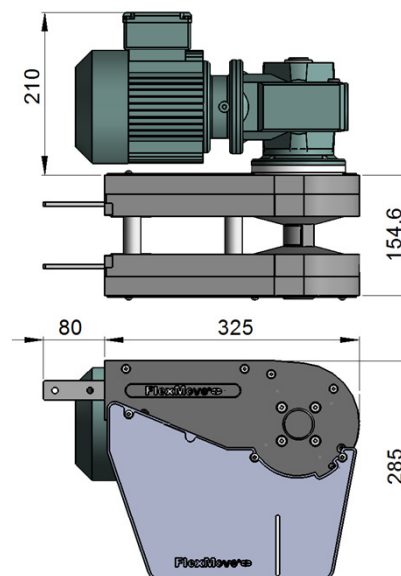
The Direct End Drive Unit is without torque limiter. Standard attached gear motors are with SEW motor size 0.25kW, 0.37kW & 0.55kW. FLDD-0L represents direct drive without gear motor. Multi channel drives are available upon request.

UOM : pc

Chain required 2-way : 0.8 meter

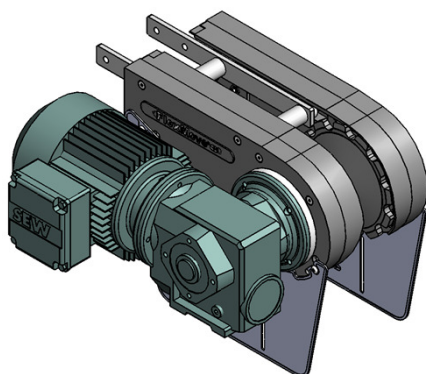
Slide rail required 2-way: 0.5 meter

FL Direct End Drive without Motor (LEFT)  
**FLDD-0L1**



FL

FL Direct End Drive with Motor (RIGHT)  
**FLDD-0.25R1, 0.37R1, 0.55R1**



Max Traction Force : 1250N

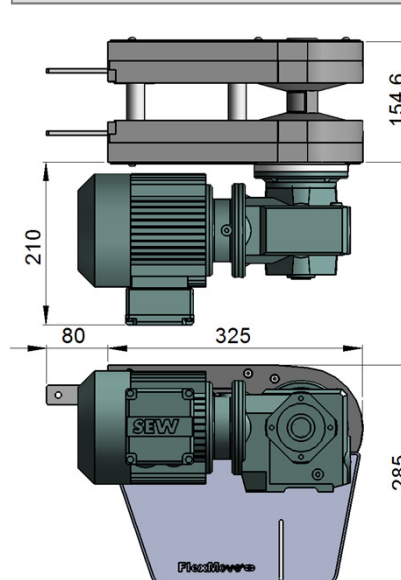
The Direct End Drive Unit is without torque limiter. Standard attached gear motors are with SEW motor size 0.25kW, 0.37kW & 0.55kW. FLDD-0R represents direct drive without gear motor. Multi channel drives are available upon request.

UOM : pc

Chain required 2-way : 0.8 meter

Slide rail required 2-way: 0.5 meter

FL Direct End Drive without Motor (RIGHT)  
**FLDD-0R1**



SEW gear motors are products of SEW Eurodrive.

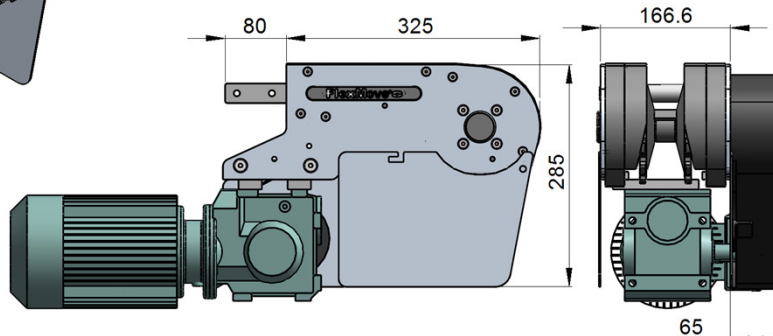
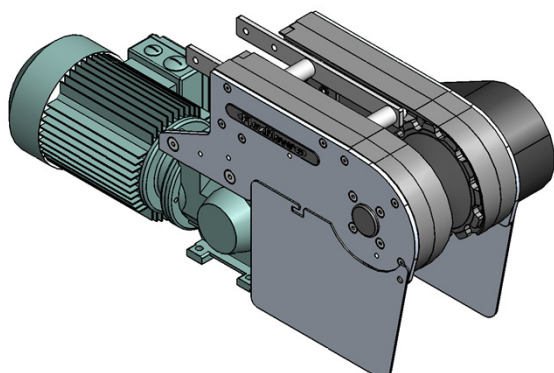


# FL SERIES

FL Suspended End Drive with Motor (LEFT)  
**FLSD-0.25L1, 0.37L1, 0.55L1**



FL Suspended End Drive without Motor (LEFT)  
**FLSD-0L1**



FL

Max Traction Force : 1250N

The Suspended End Drive Unit is with torque limiter. Standard attached gear motors are with SEW motor size 0.25kW, 0.37kW & 0.55kW. FLSD-0L represents suspended drive without gear motor.

UOM : pc

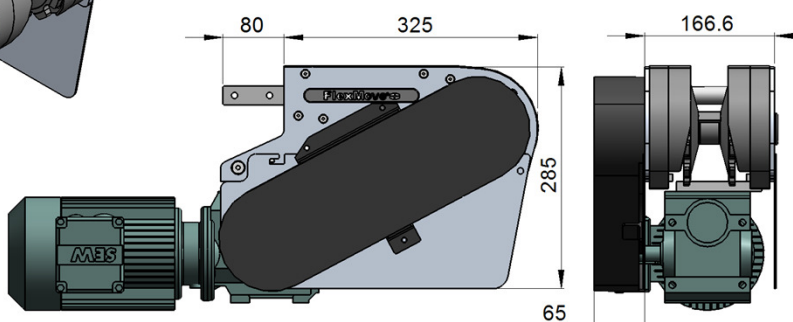
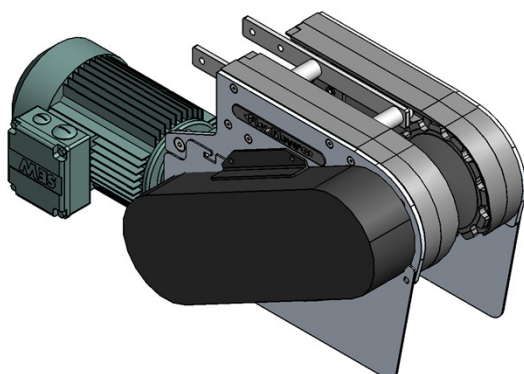
Chain required 2-way : 0.8 meter

Slide rail required 2-way: 0.5 meter

FL Suspended End Drive with Motor (RIGHT)  
**FLSD-0.25R1, 0.37R1, 0.55R1**



FL Suspended End Drive without Motor (RIGHT)  
**FLSD-0R1**



Max Traction Force : 1250N

The Suspended End Drive Unit is with torque limiter. Standard attached gear motors are with SEW motor size 0.25kW, 0.37kW & 0.55kW. FLSD-0R represents suspended drive without gear motor.

UOM : pc

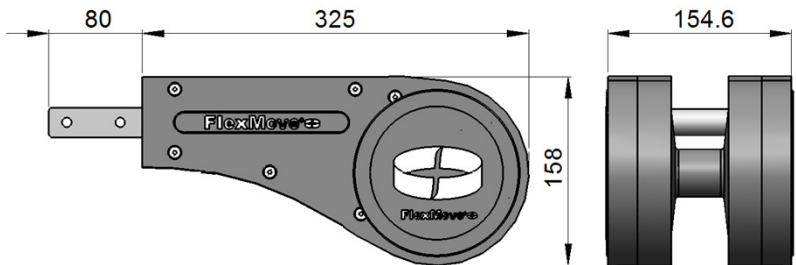
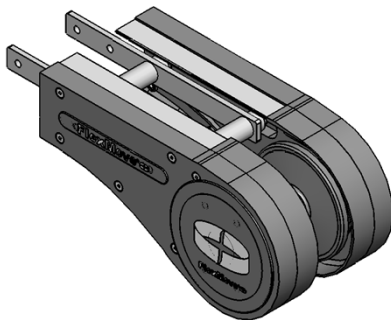
Chain required 2-way : 0.8 meter

Slide rail required 2-way: 0.5 meter

SEW gear motors are products of SEW Eurodrive.

**FL SERIES**

FL Idler End-325  
**FLIE-325**

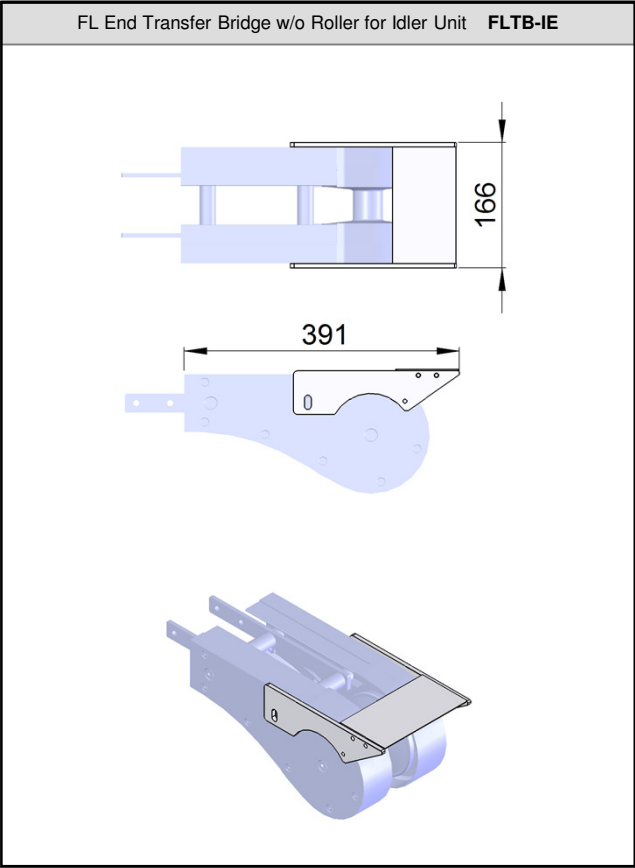
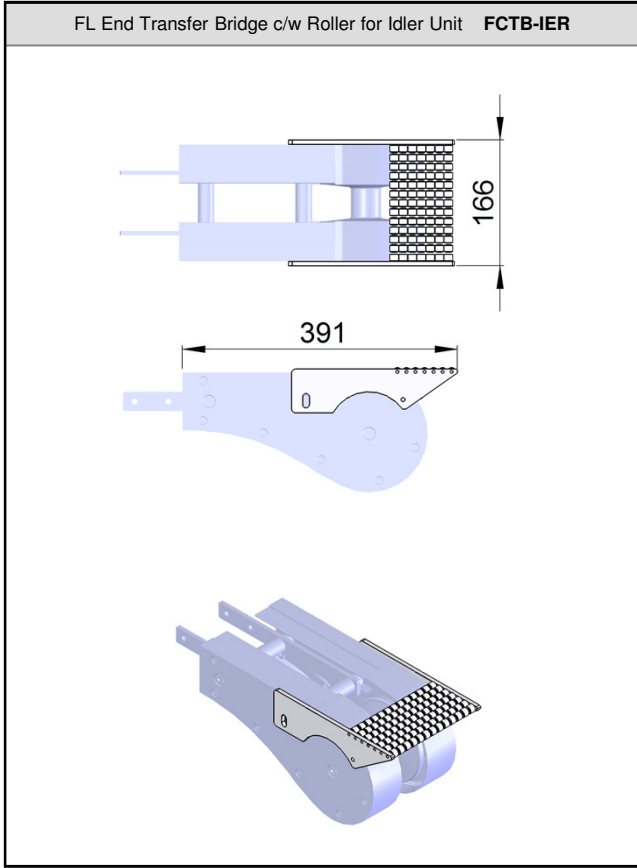
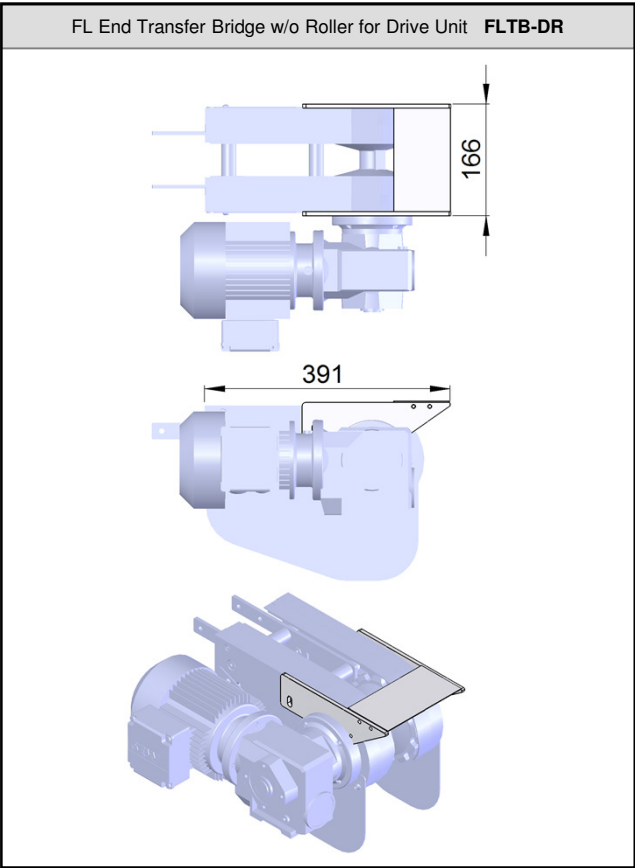
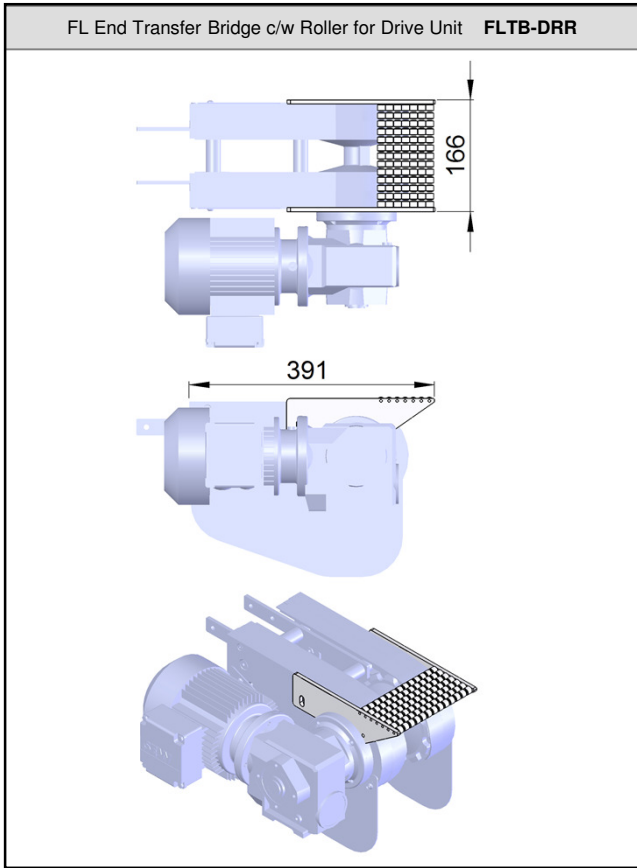


FL

UOM : pc  
Chain required 2-way : 0.8 meter  
Slide rail required 2-way: 0.5 meter

FL SERIES

FL

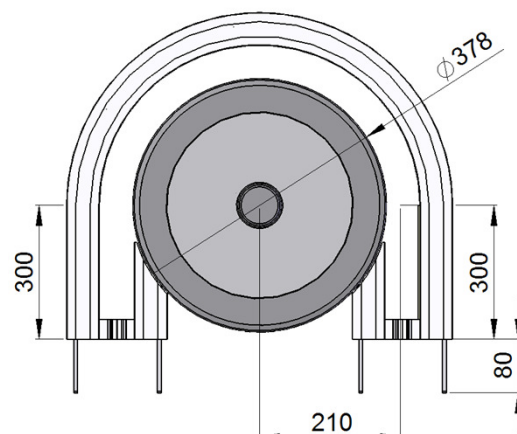
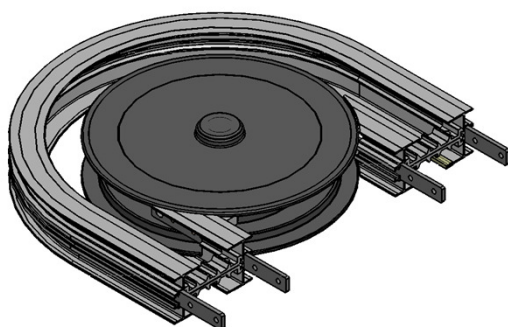




**FL SERIES**

FL Wheel Bend 180°

**FLWB-180R210**



FL

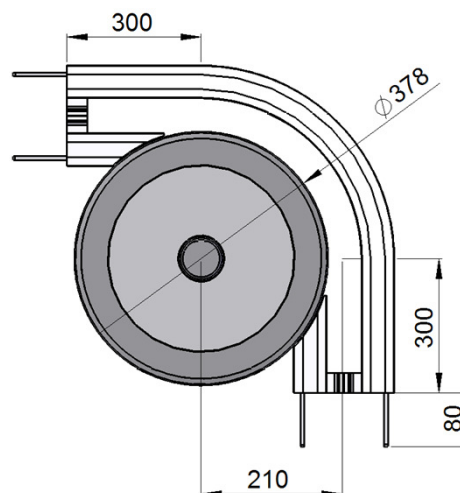
UOM : pc

Chain required 2-way : 2.2 meter

Slide rail required 2-way: 4.2 meter

FL Wheel Bend 90°

**FLWB-90R210**



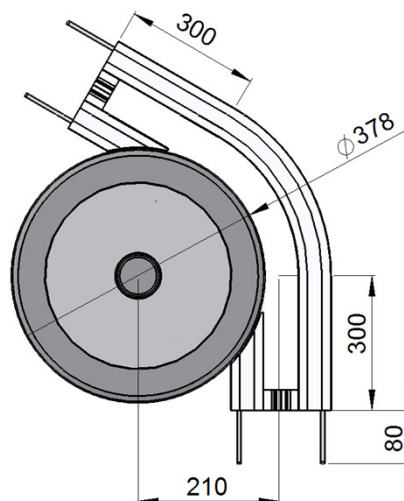
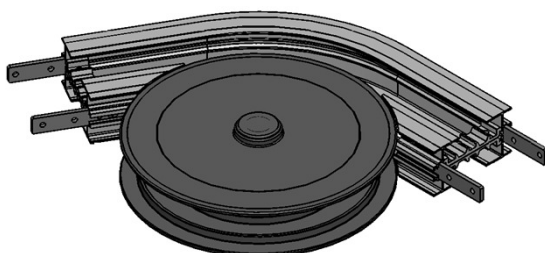
UOM : pc

Chain required 2-way : 1.5 meter

Slide rail required 2-way: 3.0 meter

FL Wheel Bend 60°

**FLWB-60R210**



UOM : pc

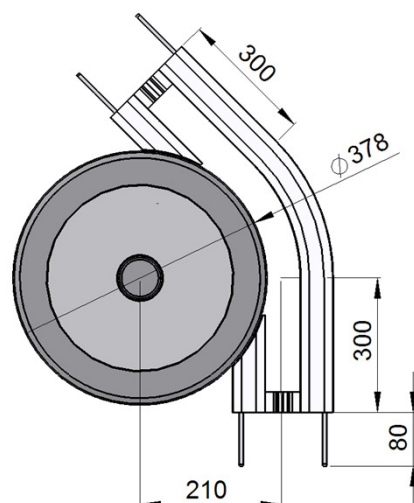
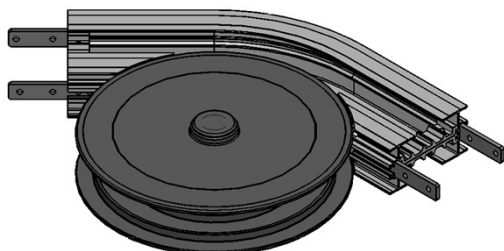
Chain required 2-way : 1.3 meter

Slide rail required 2-way: 2.5 meter

## FL SERIES

FL Wheel Bend 45°

**FLWB-45R210**



FL

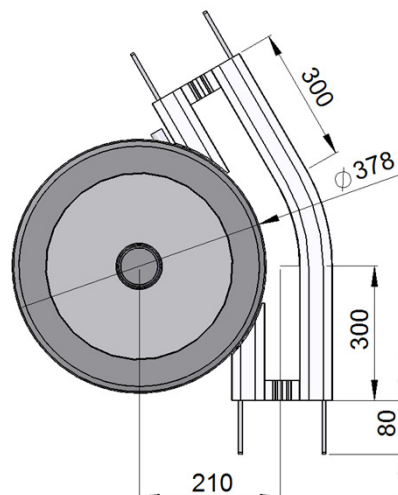
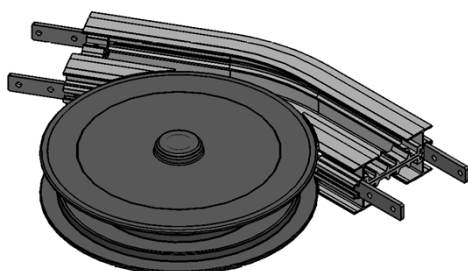
UOM : pc

Chain required 2-way : 1.4 meter

Slide rail required 2-way: 2.6 meter

FL Wheel Bend 30°

**FLWB-30R210**



UOM : pc

Chain required 2-way : 1.1 meter

Slide rail required 2-way: 2.1 meter

FL Wheel Bend 5° - 180°

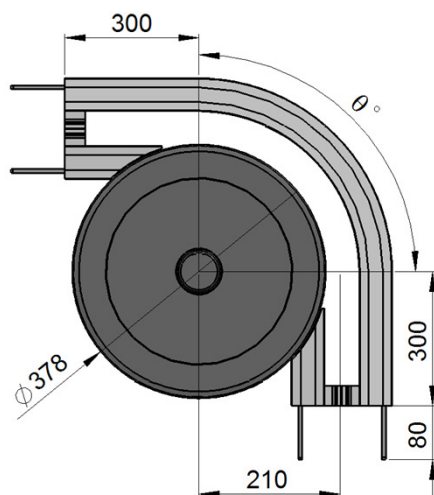
### Example for FL Wheel Bend Ordering

Wheel bend,  $\Theta^\circ \pm 1^\circ$

**FLWB- $\Theta^\circ$ R210**

If an angle of 65° is needed for wheel bend, so the ordering part number is

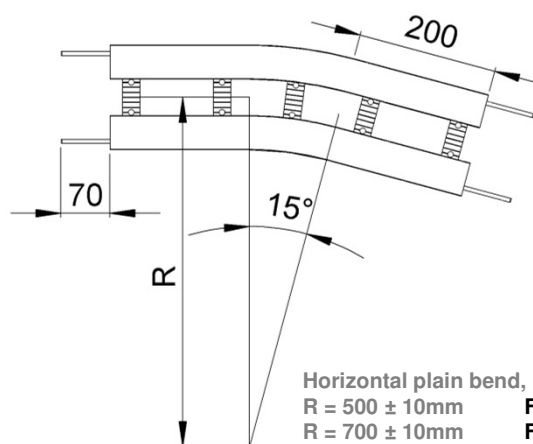
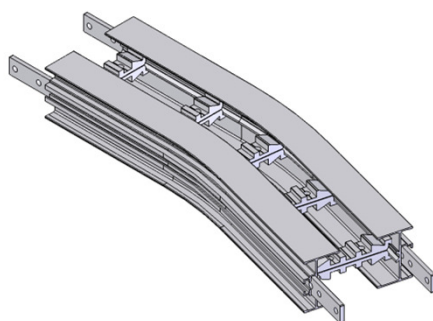
**FLWB-65R210**



The outer bend is assembled using connecting strip (FACS-25x140A). Angle of  $\Theta^\circ$  must be indicated when ordering.

**FL SERIES**

FL Horizontal Plain Bend 15°



FL

UOM : pc

Chain required 2-way (500, 700, 1000) : 1.1, 1.2, 1.4 meter

Slide rail required 2-way (500, 700, 1000): 2.2, 2.4, 2.8 meter

Horizontal plain bend, 15° ± 1°

R = 500 ± 10mm

**FLHB-15R500**

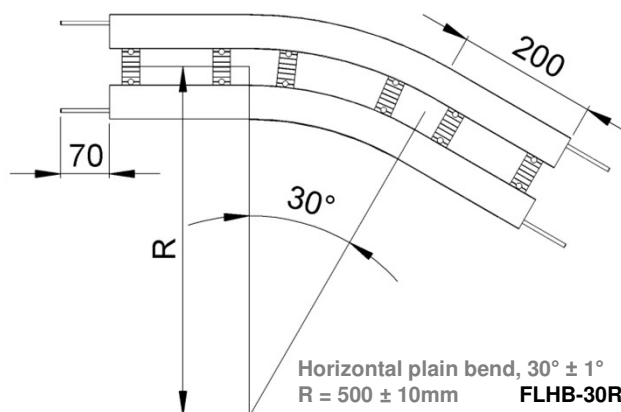
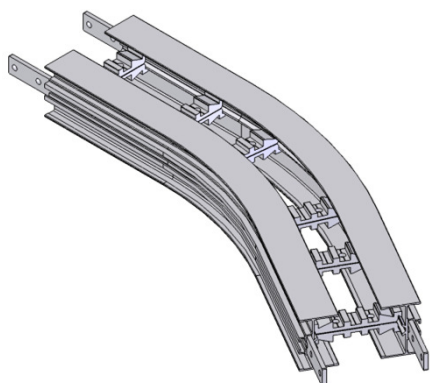
R = 700 ± 10mm

**FLHB-15R700**

R = 1000 ± 10mm

**FLHB-15R1000**

FL Horizontal Plain Bend 30°



UOM : pc

Chain required 2-way (500, 700, 1000) : 1.4, 1.6, 1.9 meter

Slide rail required 2-way (500, 700, 1000): 2.8, 3.2, 3.8 meter

Horizontal plain bend, 30° ± 1°

R = 500 ± 10mm

**FLHB-30R500**

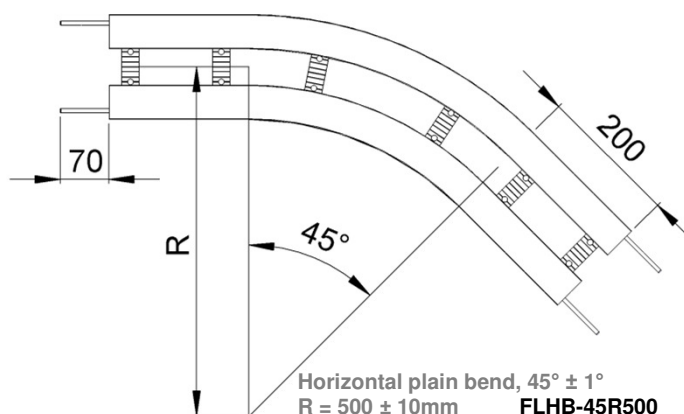
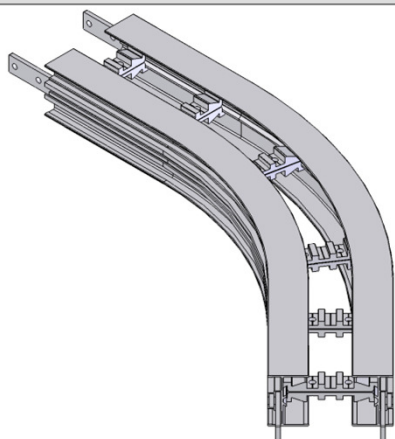
R = 700 ± 10mm

**FLHB-30R700**

R = 1000 ± 10mm

**FLHB-30R1000**

FL Horizontal Plain Bend 45°



UOM : pc

Chain required 2-way (500, 700, 1000) : 1.6, 1.9, 2.4 meter

Slide rail required 2-way (500, 700, 1000): 2.9, 3.3, 3.9 meter

Horizontal plain bend, 45° ± 1°

R = 500 ± 10mm

**FLHB-45R500**

R = 700 ± 10mm

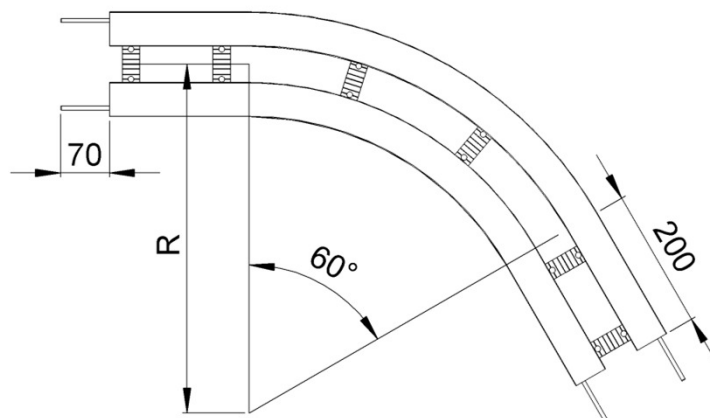
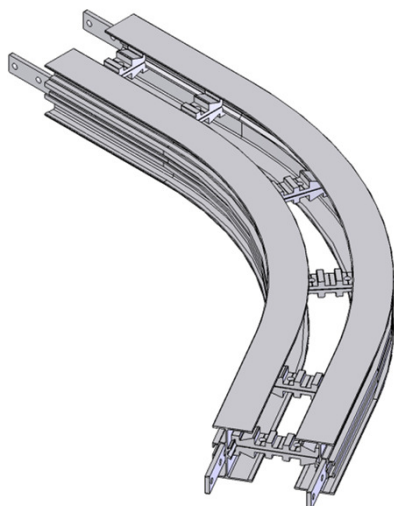
**FLHB-45R700**

R = 1000 ± 10mm

**FLHB-45R1000**

**FL SERIES**

FL Horizontal Plain Bend 60°



FL

UOM : pc

Chain required 2-way (500, 700, 1000) : 1.9, 2.3, 2.9 meter

Slide rail required 2-way (500, 700, 1000): 3.7, 4.6, 5.8 meter

Horizontal plain bend, 60° ± 1°

R = 500 ± 10mm

**FLHB-60R500**

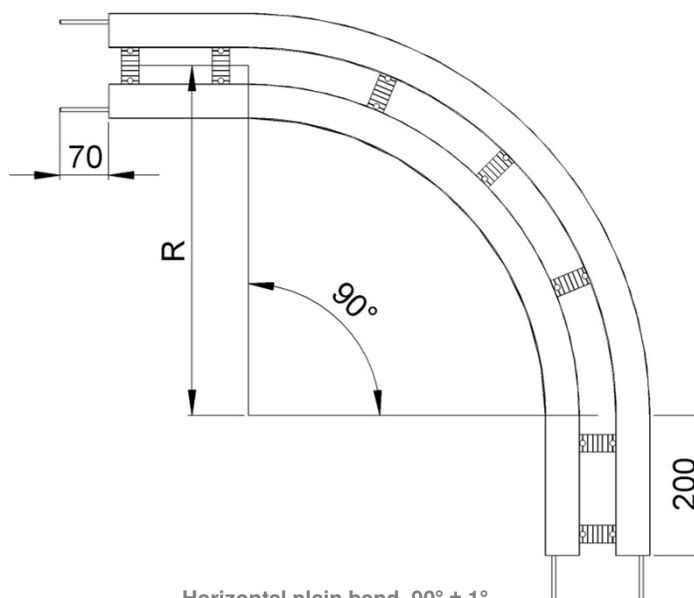
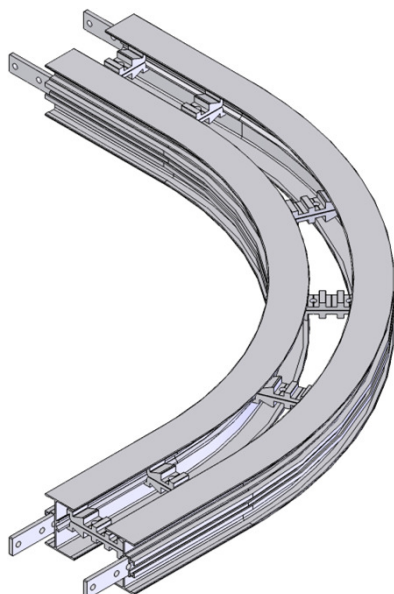
R = 700 ± 10mm

**FLHB-60R700**

R = 1000 ± 10mm

**FLHB-60R1000**

FL Horizontal Plain Bend 90°



UOM : pc

Chain required 2-way (500, 700, 1000) : 2.4, 3.0, 4.0 meter

Slide rail required 2-way (500, 700, 1000): 4.8, 6.0, 8.0 meter

Horizontal plain bend, 90° ± 1°

R = 500 ± 10mm

**FLHB-90R500**

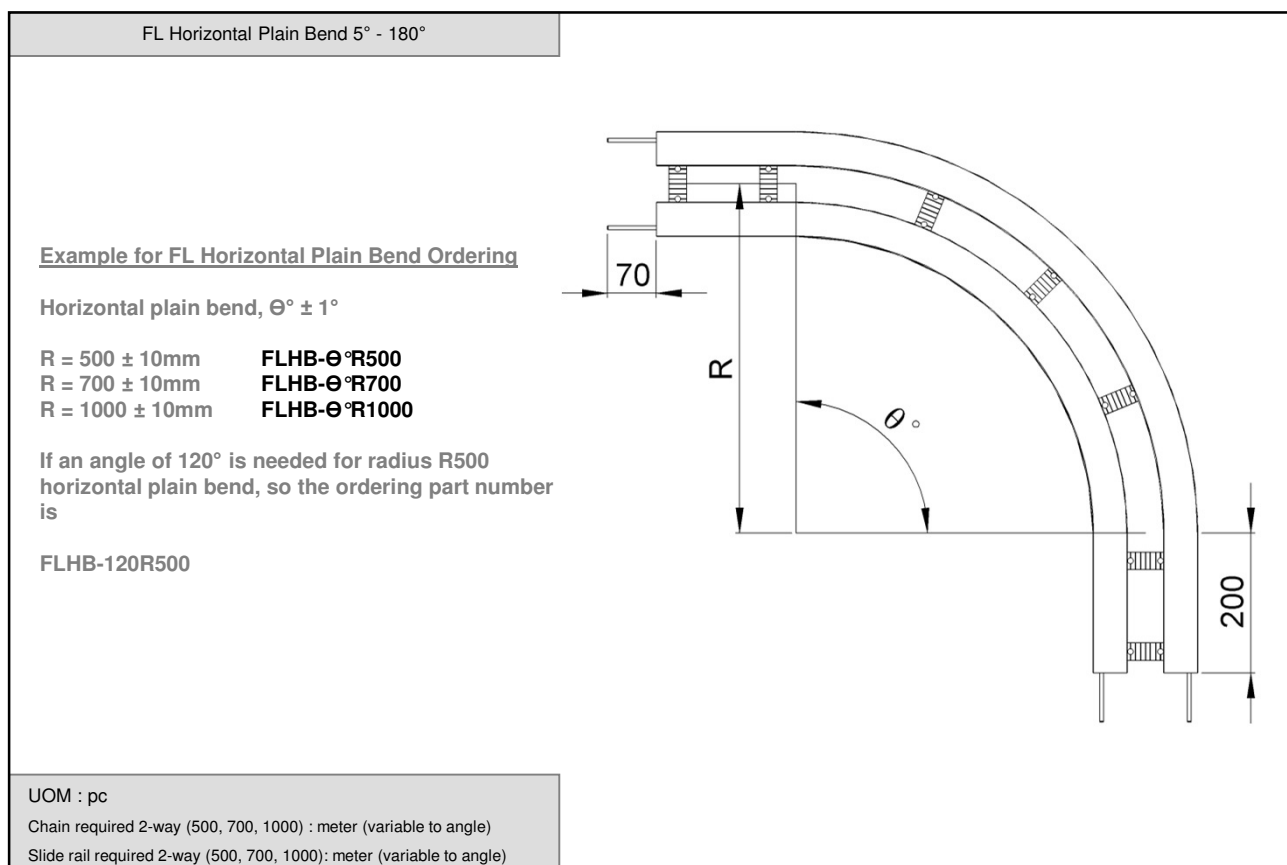
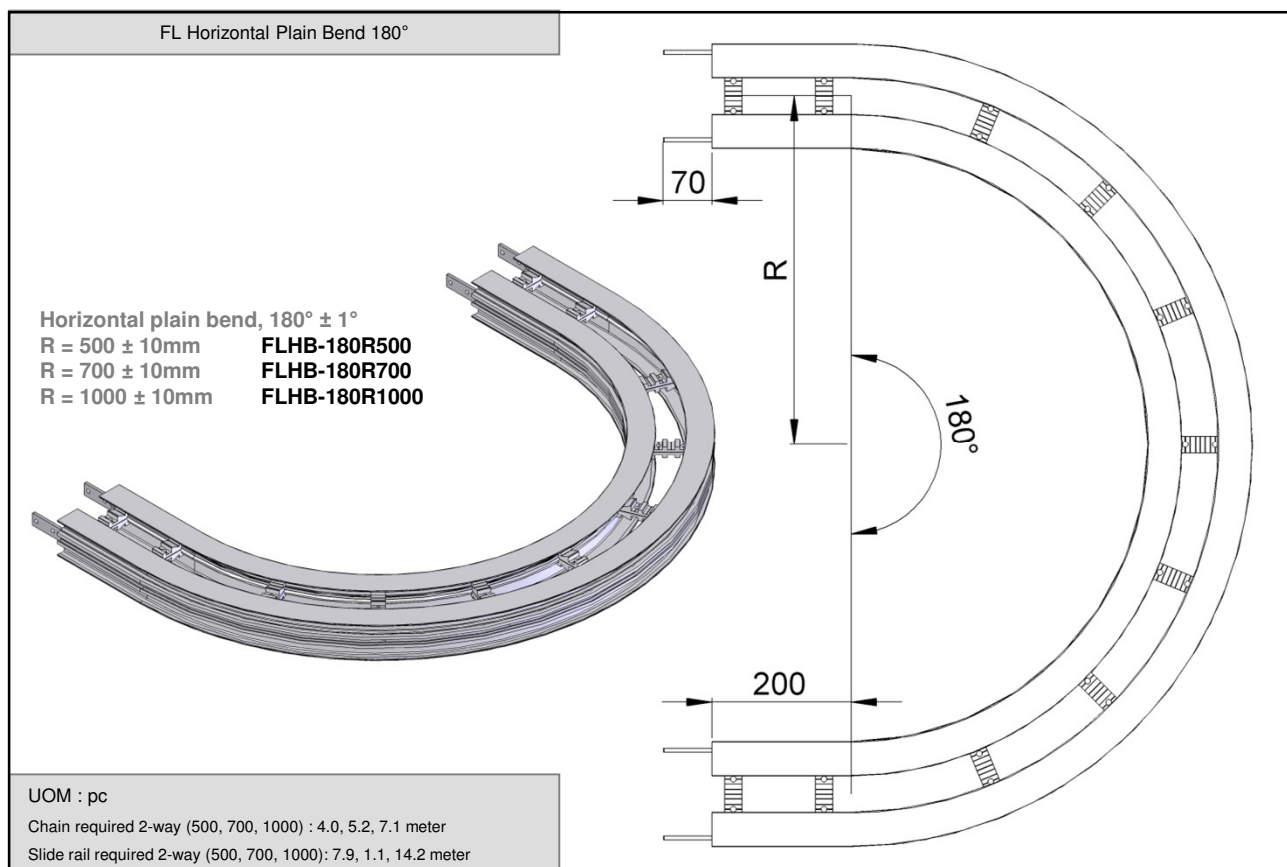
R = 700 ± 10mm

**FLHB-90R700**

R = 1000 ± 10mm

**FLHB-90R1000**

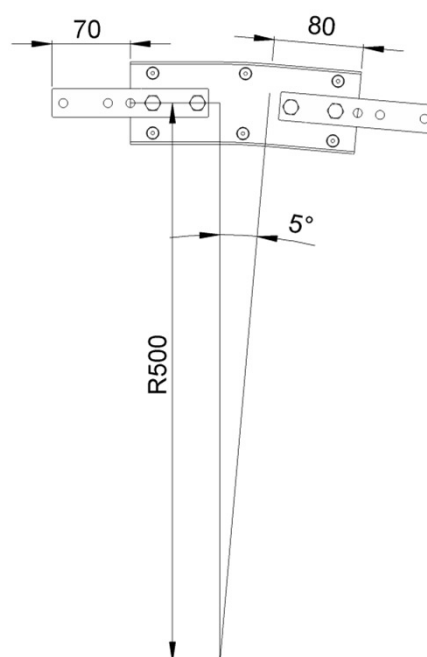
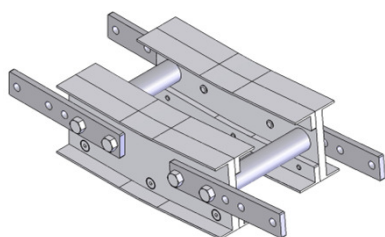
## FL SERIES



**FL SERIES**

FL Vertical Bend 5°

**FLVB-5R500**



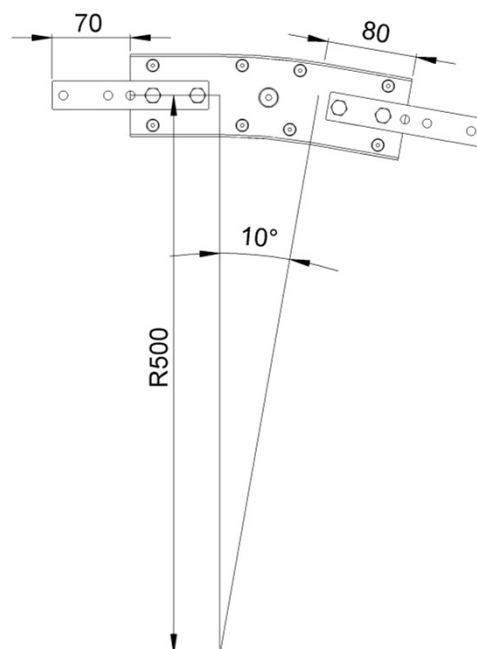
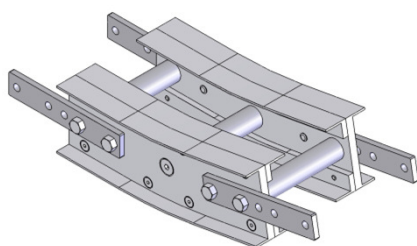
FL

UOM: pc

Chain required 2-way: 0.5 meter  
Slide rail required 2-way: 0.9 meter

FL Vertical Bend 10°

**FLVB-10R500**



UOM: pc

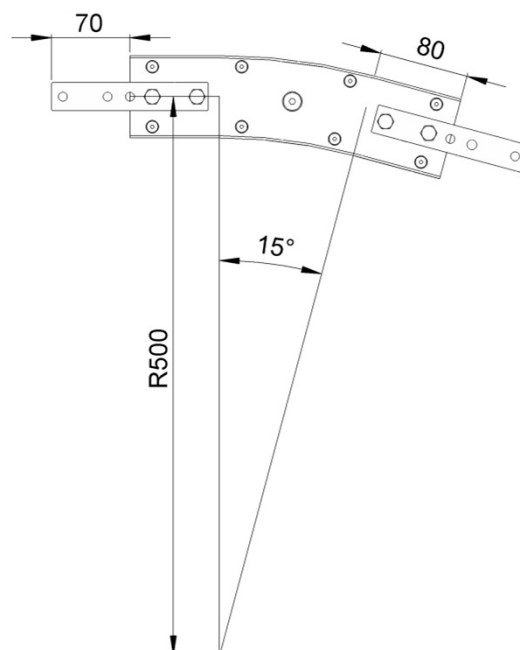
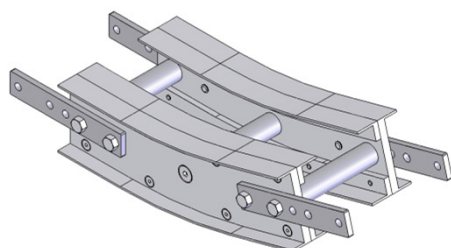
Chain required 2-way: 0.5 meter  
Slide rail required 2-way: 1.0 meter



**FL SERIES**

FL Vertical Bend 15°

**FLVB-15R500**



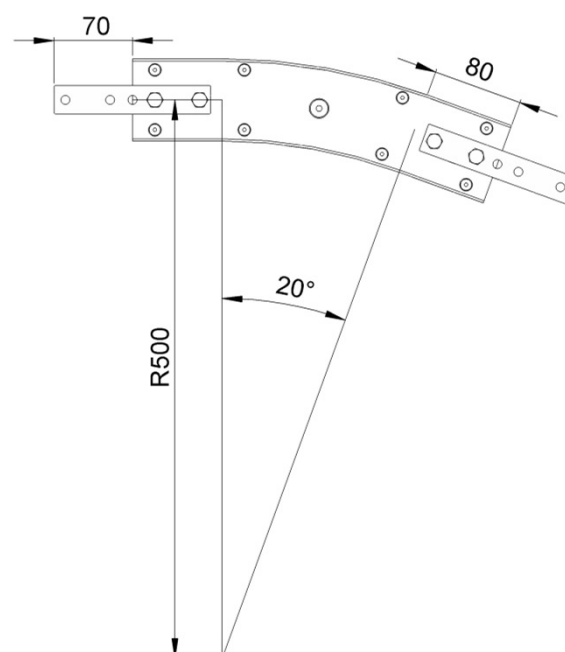
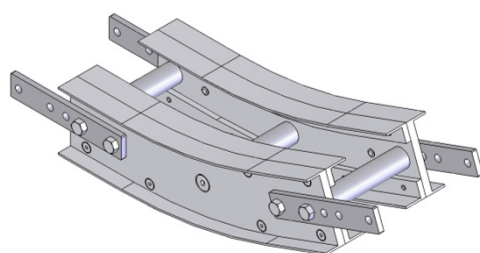
FL

UOM: pc

Chain required 2-way: 0.6 meter  
Slide rail required 2-way: 1.2 meter

FL Vertical Bend 20°

**FLVB-20R500**



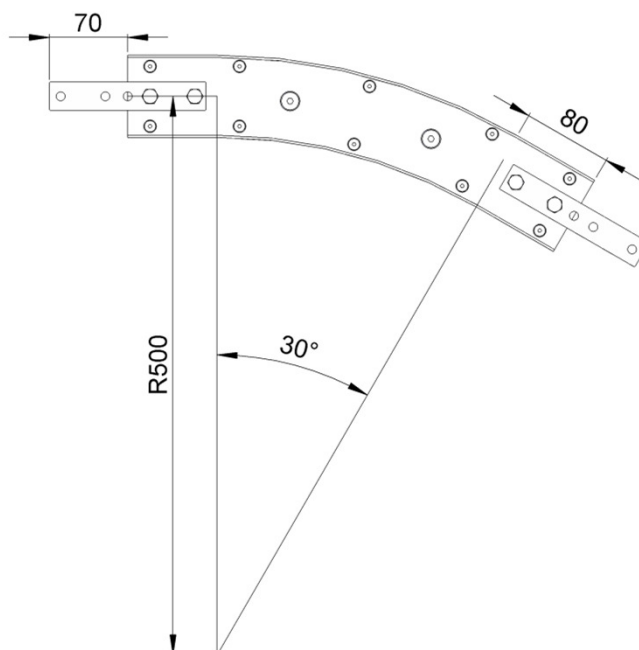
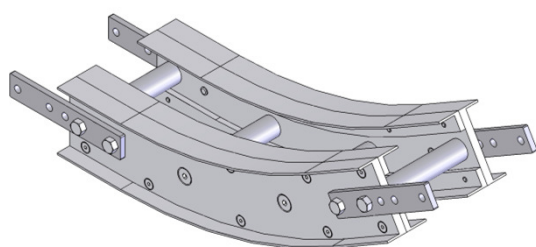
UOM: pc

Chain required 2-way: 0.7 meter  
Slide rail required 2-way: 1.4 meter

**FL SERIES**

FL Vertical Bend 30°

**FLVB-30R500**



FL

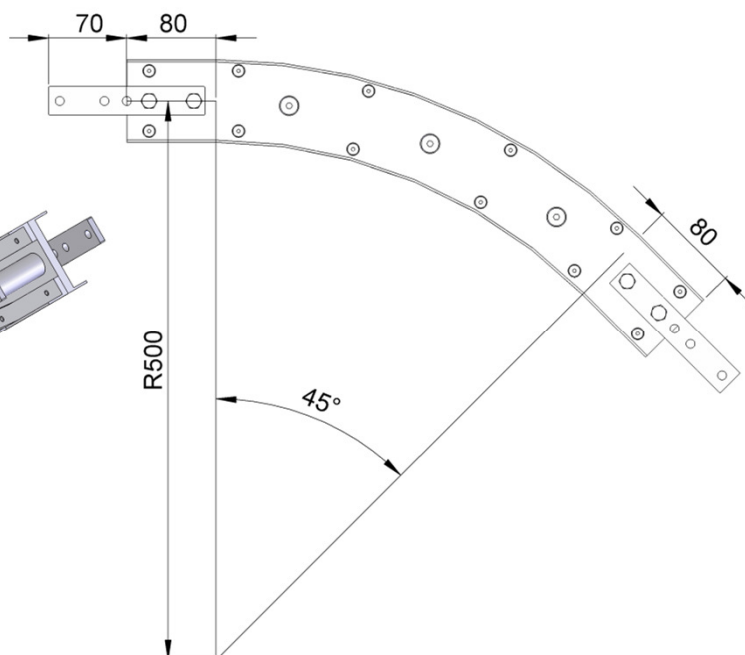
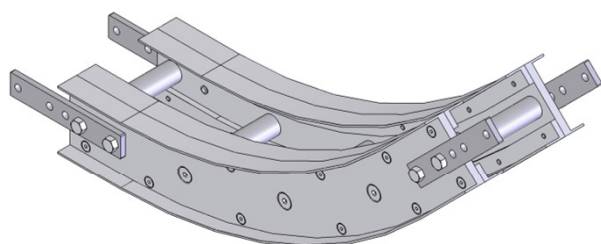
UOM: pc

Chain required 2-way: 0.9 meter

Slide rail required 2-way: 1.7 meter

FL Vertical Bend 45°

**FLVB-45R500**



UOM: SET

Chain required 2-way: 1.2 meter

Slide rail required 2-way: 2.3 meter

**FL SERIES**

FL Vertical Bend 5°-90°

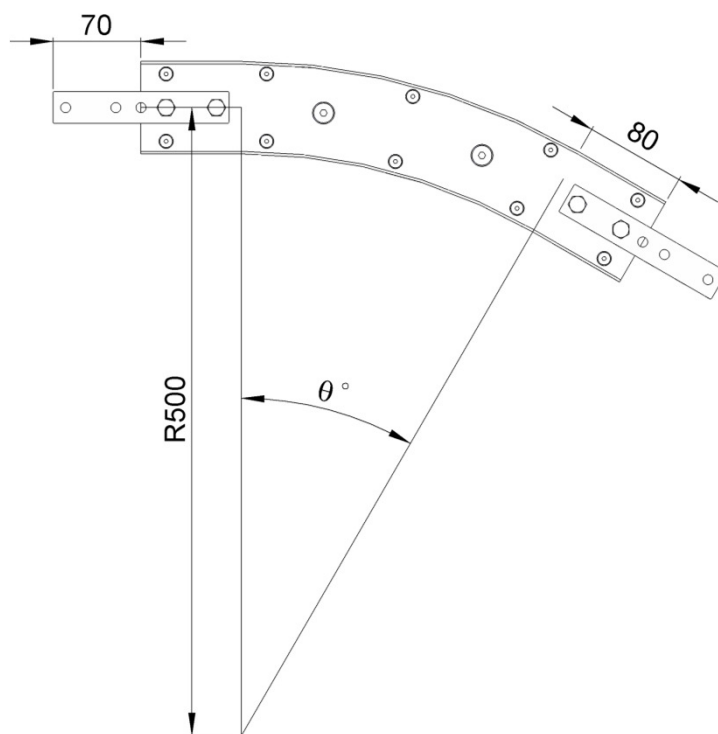
Example for FL Vertical Bend Ordering

Vertical bend,  $\Theta^\circ \pm 1^\circ$

FLVB- $\Theta^\circ$ R500

If an angle of  $65^\circ$  is needed for vertical bend, so the ordering part number is

**FLVB-65R500**



FL

The outer bend is assembled using connecting strip (FACS-25x140A) .  
Angle of " $\Theta^\circ$ " must be indicated when ordering.