

FK

FK SERIES

FK Series is a compact and neat design for small items and fast transportation.
It is also used for twin track application for pallet assembly line.

FK Series Characteristic

Beam Width: 45mm

Product Width: Refer to Guide Rail Assembly

Accessories Needed

Slide Rail Required: FASR-25K OR FASR-25KU

Slide Rail Colour: WHITE OR NATURAL COLOUR

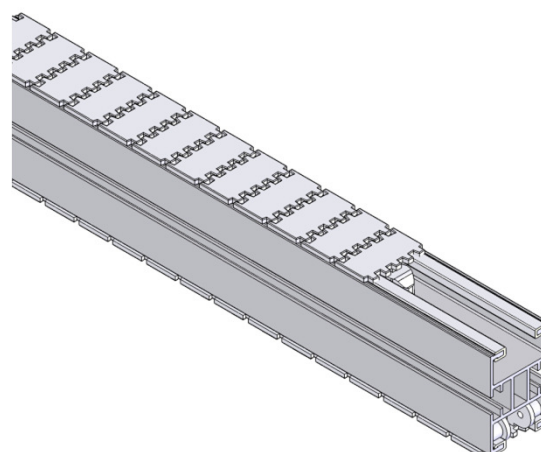
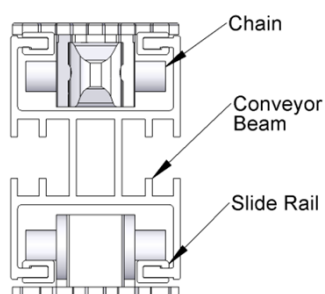
Slide Rail Material: HDPE OR UHMW-PE

Slide Rail Rivet: FASLR-3X6

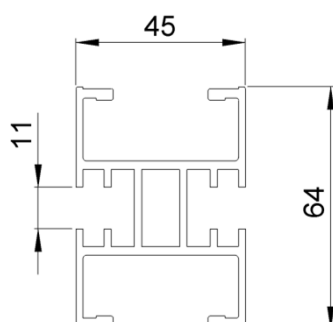
Connecting strip is used to connect 2 beams.

Connecting Strip: FACS-20x140

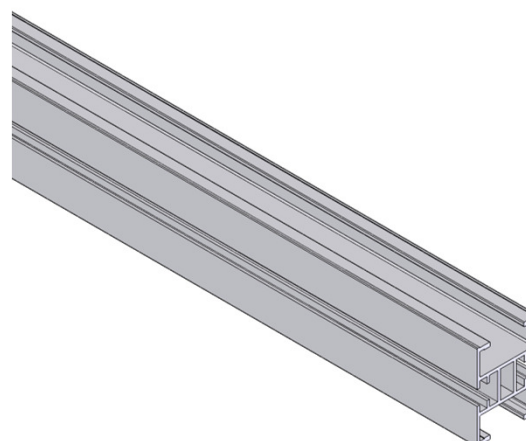
FK



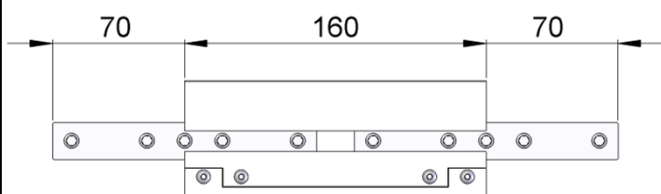
Conveyor Beam **FKCB-3**



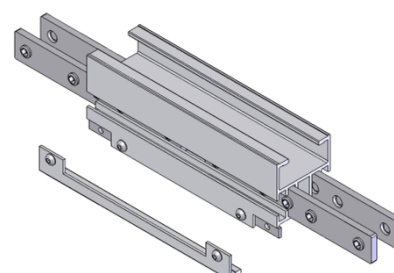
UOM : 3 Meter / Length



Chain Connecting Module **FKCC-160**



UOM: pc



FK SERIES

Chain Common Data

Packaging: 5m per box
Pitch: 25.4mm
Width: 44mm
Tensile Strength at 20°C: 4000N
Colour: White & Black (Conductive)

Material :-

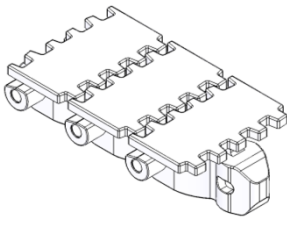
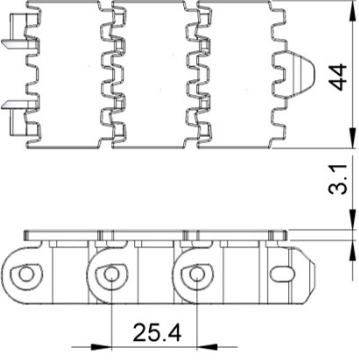
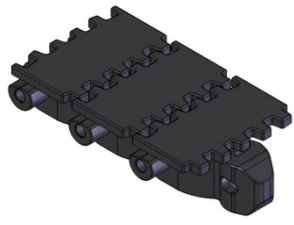
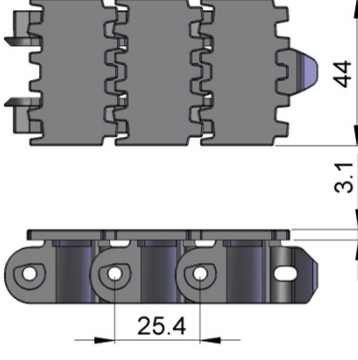
Chain: White Acetal / POM

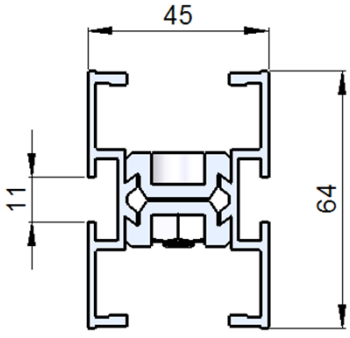
Pivot: Polyamide

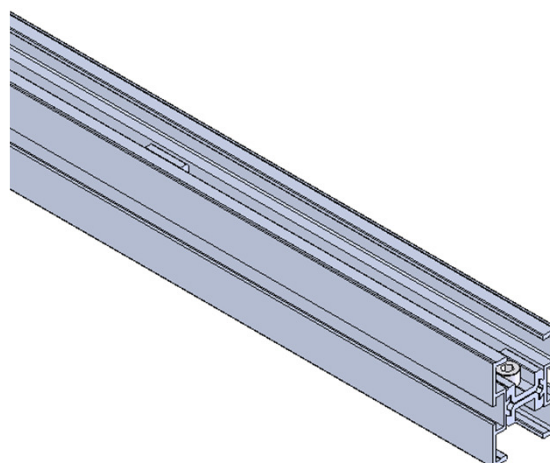
Pivot Pin : Stainless Steel

Insert (Wedge & Friction): TPE Grey

FK

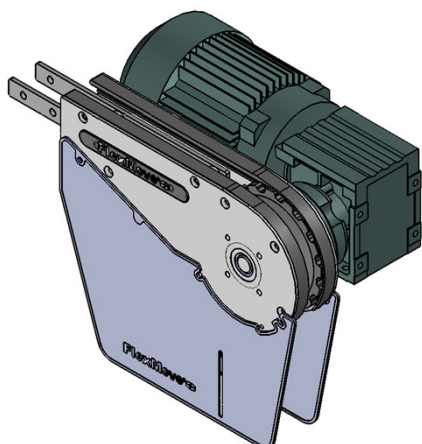
Standard Plain Chain FKPC-5	Conductive Chain FKPC-5CD
 	 
<p>UOM: 5 Meter / box</p> <p>Application: Suitable for horizontal and slope < 5° transport of products with accumulation.</p>	<p>UOM: 5 Meter / box</p> <p>Application: Suitable for transport of static sensitive product.</p>

Conveyor Half Beam FKCB-3H

<p>UOM : 3 Meter / Length</p>



FK SERIES

FK Direct End Drive with Motor (LEFT)
FKDD-320-0.25L1, 0.37L1, 0.55L1



Max Traction Force : 500N

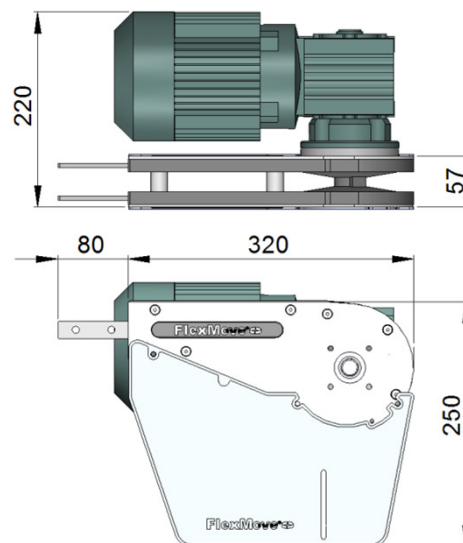
The Direct End Drive Unit is without torque limiter. Standard attached gear motors are with SEW motor size 0.25kW, 0.37kW & 0.55kW. FKDD-320-0L represents direct drive without motor. Multi channel drives are available upon request.

UOM : pc

Chain required 2-way : 0.8 meter

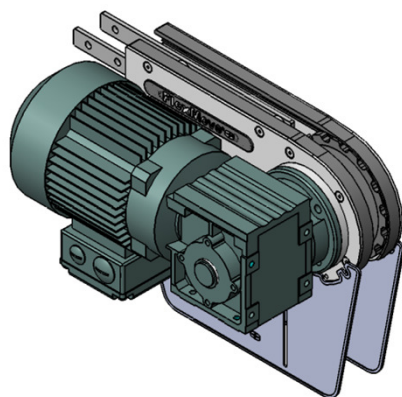
Slide rail required 2-way : 0.5 meter

FK Direct End Drive without Motor (LEFT)
FKDD-0L1



FK

FK Direct End Drive with Motor (RIGHT)
FKDD-320-0.25R1, 0.37R1, 0.55R1



Max Traction Force : 500N

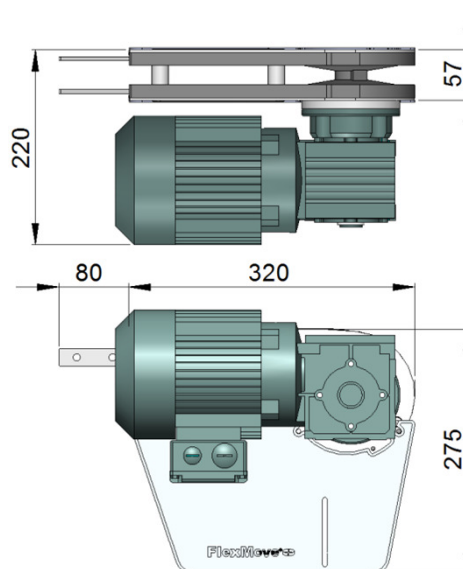
The Direct End Drive Unit is without torque limiter. Standard attached gear motors are with SEW motor size 0.25kW, 0.37kW & 0.55kW. FKDD-320-0R represents direct drive without motor. Multi channel drives are available upon request.

UOM : pc

Chain required 2-way : 0.8 meter

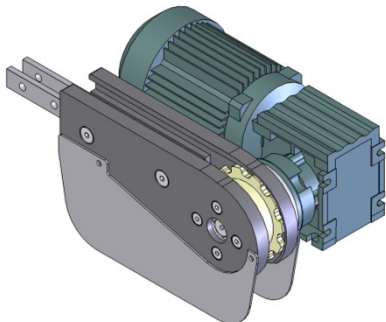
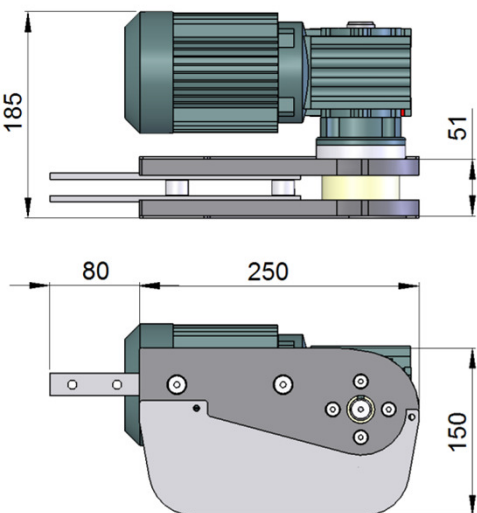
Slide rail required 2-way : 0.5 meter

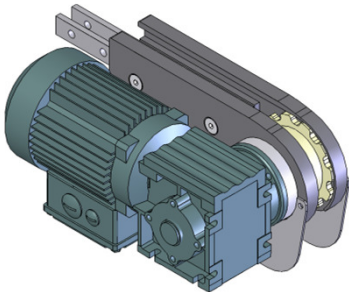
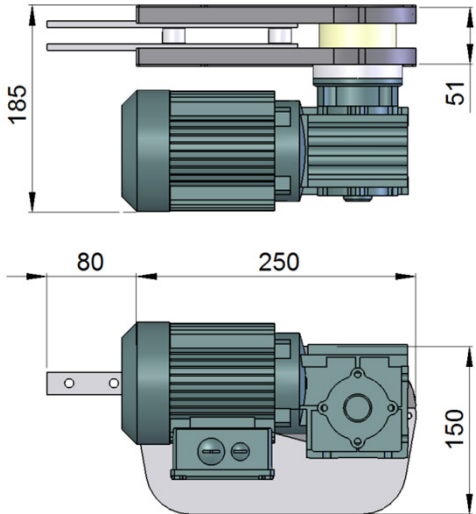
FK Direct End Drive without Motor (RIGHT)
FKDD-0R1



SEW gear motors are products of SEW Eurodrive.


FK SERIES


FK Direct End Drive with Motor (LEFT) FKDD-250-0.25L, 0.37L, 0.55L	FK Direct End Drive without Motor (LEFT) FKDD-250-0L
 <p>Max Traction Force : 400N</p> <p>The Direct End Drive Unit is without torque limiter. Standard attached gear motors are with SEW motor size is 0.12kW. FKDD-250-0L represents direct drive without gear motor. Multi channel drives are available upon request.</p> <p>UOM : pc Chain required 2-way : 0.55 meter Slide rail required 2-way: 0</p>	 <p>FK</p>

FK Direct End Drive with Motor (RIGHT) FKDD-250-0.25R, 0.37R, 0.55R	FK Direct End Drive without Motor (RIGHT) FKDD-250-0R
 <p>Max Traction Force : 400N</p> <p>The Direct End Drive Unit is without torque limiter. Standard attached gear motors are with SEW motor size is 0.12kW. FKDD-250-0R represents direct drive without gear motor. Multi channel drives are available upon request.</p> <p>UOM : pc Chain required 2-way : 0.55 meter Slide rail required 2-way: 0</p>	

SEW gear motors are products of SEW Eurodrive.

FK SERIES

FK Suspended End Drive with Motor (LEFT) FKSD-0.25L1, 0.37L1, 0.55L1		FK Suspended End Drive without Motor (LEFT) FKSD-0L1
<div data-bbox="1458 353 1522 394" style="border: 1px solid black; padding: 2px; text-align: center;">FK</div> <div data-bbox="183 369 726 705"> </div> <div data-bbox="662 560 1412 884"> </div> <div data-bbox="172 878 451 902" data-label="Text"> <p>Max Traction Force : 500N</p> </div> <div data-bbox="167 913 1385 972" data-label="Text"> <p>The Suspended End Drive Unit is with torque limiter. Standard attached gear motors are with SEW motor size 0.25kW, 0.37kW & 0.55kW. FKSD-0L represents direct drive without gear motor.</p> </div> <div data-bbox="162 999 252 1025" data-label="Text"> <p>UOM : pc</p> </div> <div data-bbox="162 1030 406 1055" data-label="Text"> <p>Chain required 2-way : 0.8 meter</p> </div> <div data-bbox="162 1059 427 1084" data-label="Text"> <p>Slide rail required 2-way: 0.5 meter</p> </div>		

FK Suspended End Drive with Motor (RIGHT) FKSD-0.25R1, 0.37R1, 0.55R1		FK Suspended End Drive without Motor (RIGHT) FKSD-0R1
<div data-bbox="215 1265 678 1624"> </div> <div data-bbox="678 1489 1412 1803"> </div> <div data-bbox="177 1796 454 1821" data-label="Text"> <p>Max Traction Force : 500N</p> </div> <div data-bbox="167 1834 1385 1892" data-label="Text"> <p>The Suspended End Drive Unit is with torque limiter. Standard attached gear motors are with SEW motor size 0.25kW, 0.37kW & 0.55kW. FKSD-0R represents direct drive without gear motor.</p> </div> <div data-bbox="162 1917 252 1944" data-label="Text"> <p>UOM : pc</p> </div> <div data-bbox="162 1948 406 1973" data-label="Text"> <p>Chain required 2-way : 0.8 meter</p> </div> <div data-bbox="162 1977 427 2002" data-label="Text"> <p>Slide rail required 2-way: 0.5 meter</p> </div>		

SEW gear motors are products of SEW Eurodrive.

FK SERIES

FK Direct Intermediate Drive with Motor (LEFT) FKID-DD-0.25L1, 0.37L1, 0.55L1	NEW	FK Direct Intermediate Drive without Motor (LEFT) FKID-DD-0L1
<div data-bbox="1458 349 1522 394" style="border: 1px solid black; padding: 2px; text-align: center;">FK</div> <div data-bbox="196 387 571 768"> </div> <div data-bbox="619 454 1177 824"> </div> <div data-bbox="1185 454 1425 824"> </div> <p>Max Traction Force : 200N</p> <p>The Direct Intermediate Drive Unit is without torque limiter. Standard attached gear motors are with SEW motor size 0.25kW, 0.37kW & 0.55kW. FKID-DD-0L represents direct drive without gear motor. Maximum traction force for FKID-DD is lower than FKDD and FKSD.</p> <div data-bbox="145 992 783 1090" style="background-color: #f0f0f0; padding: 5px;"> <p>UOM : pc</p> <p>Chain required 2-way : 1.2 meter</p> <p>Slide rail required 2-way: 1.1 meter</p> </div>		

FK Direct Intermediate Drive with Motor (RIGHT) FKID-DD-0.25R1, 0.37R1, 0.55R1	NEW	FK Direct Intermediate Drive without Motor (RIGHT) FKID-DD-0R1
<div data-bbox="177 1346 595 1682"> </div> <div data-bbox="603 1402 1161 1727"> </div> <div data-bbox="1169 1357 1409 1727"> </div> <p>Max Traction Force : 200N</p> <p>The Direct Intermediate Drive Unit is without torque limiter. Standard attached gear motors are with SEW motor size 0.25kW, 0.37kW & 0.55kW. FKID-DD-0R represents direct drive without gear motor. Maximum traction force for FKID-DD is lower than FKDD and FKSD.</p> <div data-bbox="145 1910 783 2007" style="background-color: #f0f0f0; padding: 5px;"> <p>UOM : pc</p> <p>Chain required 2-way : 1.2 meter</p> <p>Slide rail required 2-way: 1.1 meter</p> </div>		

SEW gear motors are products of SEW Eurodrive.

FK SERIES

FK Suspended Intermediate Drive with Motor (LEFT)

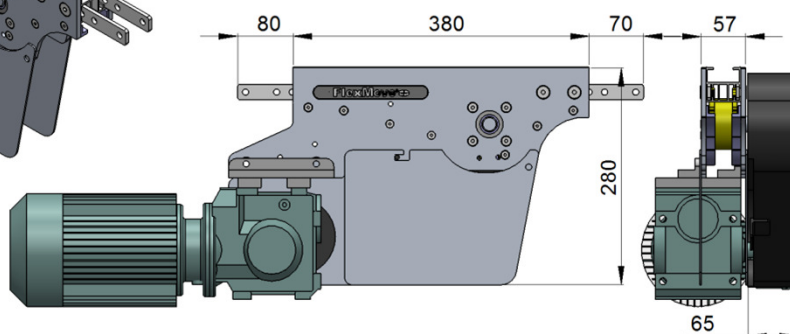
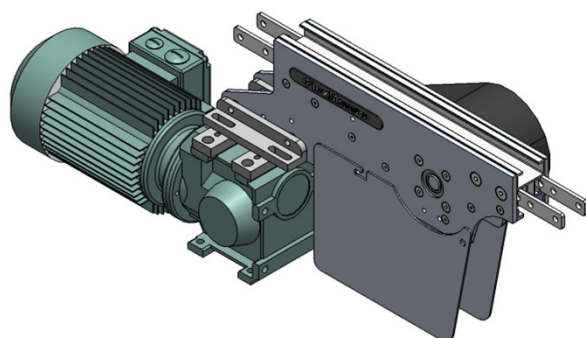
FKID-SD-0.25L1, 0.37L1, 0.55L1



FK Suspended Intermediate Drive without Motor (LEFT)

FKID-SD-0L1

FK



Max Traction Force : 200N

The Suspended Intermediate Drive Unit is with torque limiter. Standard attached gear motors are with SEW motor size 0.25kW, 0.37kW & 0.55kW. FKID-SD-0L represents suspended drive without gear motor. Maximum traction force for FKID-SD is lower than FKDD and FKSD.

UOM : pc

Chain required 2-way : 1.2 meter

Slide rail required 2-way: 1.1 meter

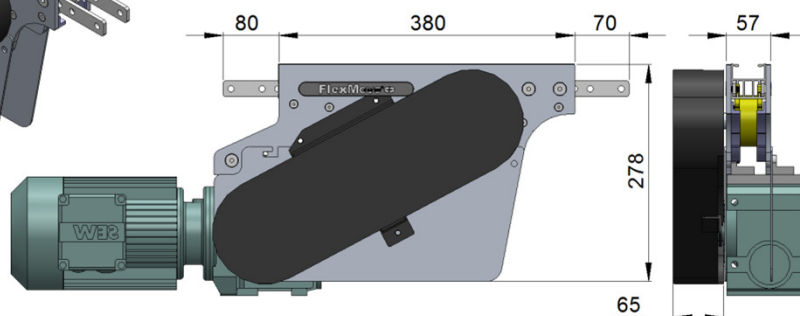
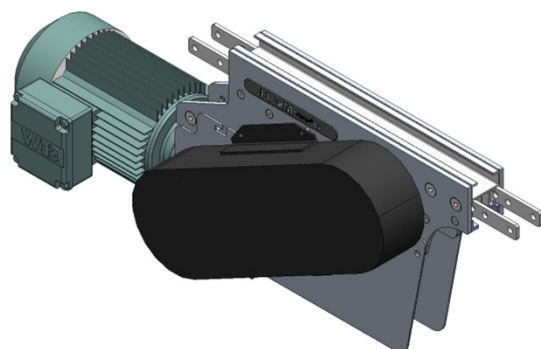
FK Suspended Intermediate Drive with Motor (RIGHT)

FKID-SD-0.25R1, 0.37R1, 0.55R1



FK Suspended Intermediate Drive without Motor (RIGHT)

FKID-SD-0R1



Max Traction Force : 200N

The Suspended Intermediate Drive Unit is with torque limiter. Standard attached gear motors are with SEW motor size 0.25kW, 0.37kW & 0.55kW. FKID-SD-0R represents suspended drive without gear motor. Maximum traction force for FKID-SD is lower than FKDD and FKSD.

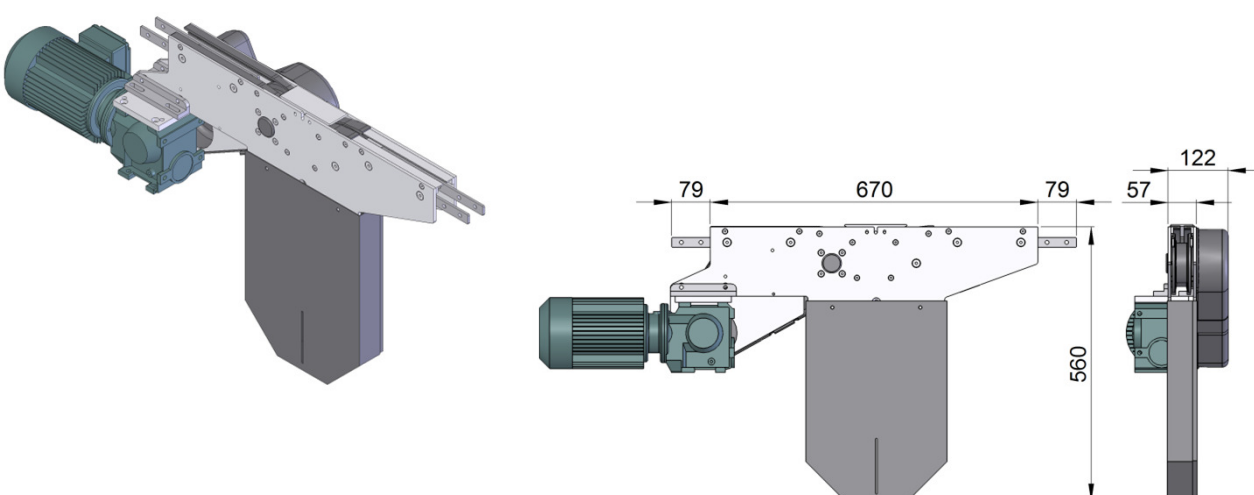
UOM : pc

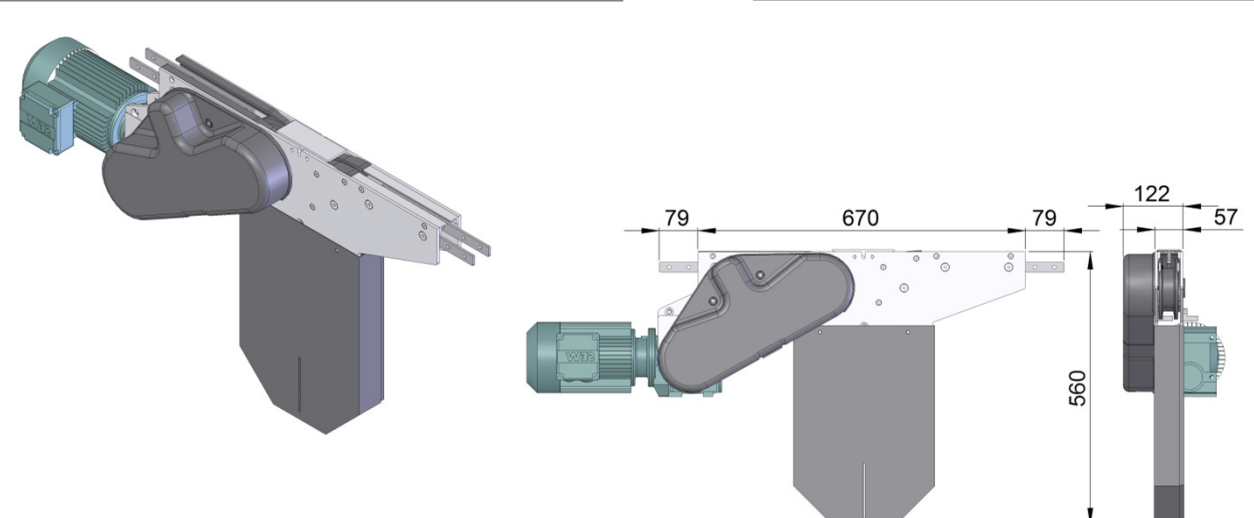
Chain required 2-way : 1.2 meter

Slide rail required 2-way: 1.1 meter

SEW gear motors are products of SEW Eurodrive.

FK SERIES

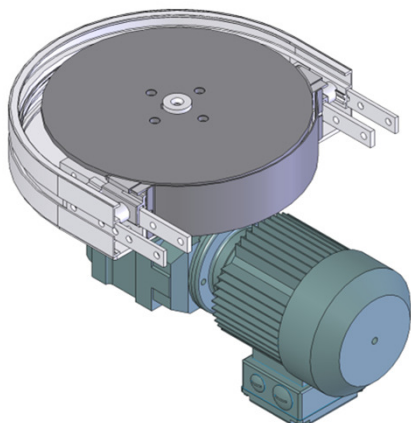
FK Suspended Catenary Drive with Motor (LEFT) FKCD-SD-0.25L, 0.37L, 0.55L	FK Suspended Catenary Drive without Motor (LEFT) FKCD-SD-0L
<div data-bbox="1455 349 1522 394" style="border: 1px solid black; padding: 2px; text-align: center;">FK</div>  <p>Max Traction Force : 500N</p> <p>The Suspended Catenary Drive Unit is with torque limiter. Standard attached gear motors are with SEW motor size 0.25kW, 0.37kW & 0.55kW. FKCD-SD-0L represents direct drive without gear motor.</p> <p>UOM : pc Chain required 1-way : 1.4 meter Slide rail required 1-way: 1.0 meter</p>	

FK Suspended Catenary Drive with Motor (RIGHT) FKCD-SD-0.25R, 0.37R, 0.55R	FK Suspended Catenary Drive without Motor (RIGHT) FKCD-SD-0R
 <p>Max Traction Force : 500N</p> <p>The Suspended Catenary Drive Unit is with torque limiter. Standard attached gear motors are with SEW motor size 0.25kW, 0.37kW & 0.55kW. FKCD-SD-0R represents direct drive without gear motor.</p> <p>UOM : pc Chain required 1-way : 1.4 meter Slide rail required 1-way: 1.0 meter</p>	

SEW gear motors are products of SEW Eurodrive.

FK SERIES

FK Direct Wheel Drive with Motor
FKWD-DD-0.25, 0.37, 0.55



Max Traction Force : 200N

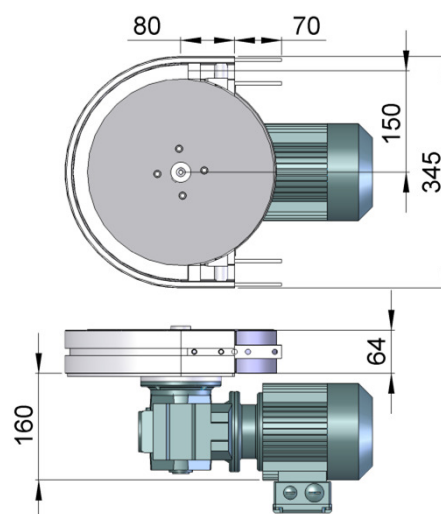
The Drive Wheel Drive Unit is without torque limiter. Standard attached gear motors are with SEW motor size 0.25kW, 0.37kW & 0.55kW. FKWD-DD-0M represents direct drive without gear motor. Maximum traction force for FKWD-DD is lower than FKDD and FKSD.

UOM : pc

Chain required 1-way : 0.7 meter

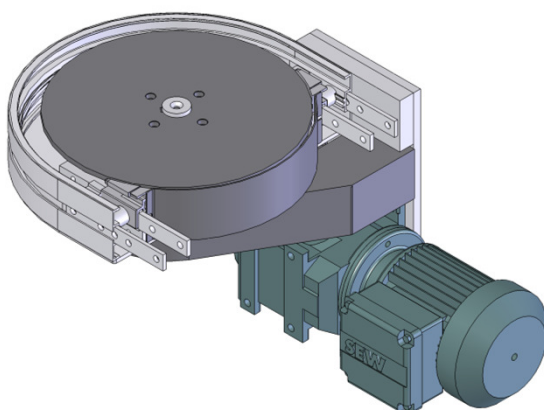
Slide rail required 1-way : 0.7 meter

FK Direct Wheel Drive without Motor
FKWD-DD-0M



FK

FK Suspended Wheel Drive with Motor
FKWSD-0.25, 0.37, 0.55



Max Traction Force : 200N

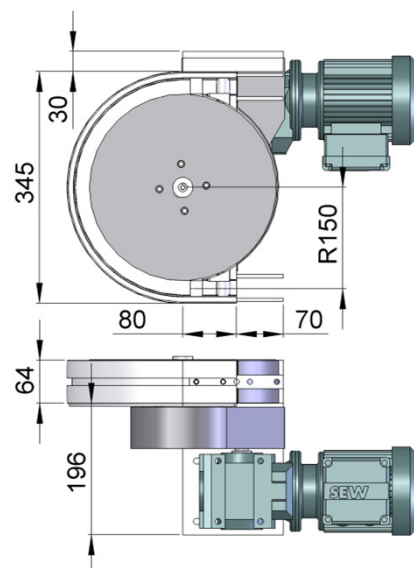
The Suspended Wheel Drive Unit is with torque limiter. Standard attached gear motors are with SEW motor size 0.25kW, 0.37kW & 0.55kW. FKWD-SD-0M represents direct drive without gear motor. Maximum traction force for FKWD-SD is lower than FKDD and FKSD.

UOM : pc

Chain required 1-way : 0.7 meter

Slide rail required 1-way : 0.7 meter

FK Suspended Wheel Drive without Motor
FKWD-SD-0M

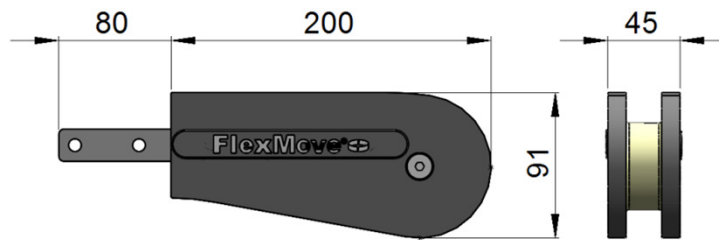


SEW gear motors are products of SEW Eurodrive.

FK SERIES

FK Idler End-200

FKIE-200



FK

UOM : pc

Chain required 2-way : 0.8 meter

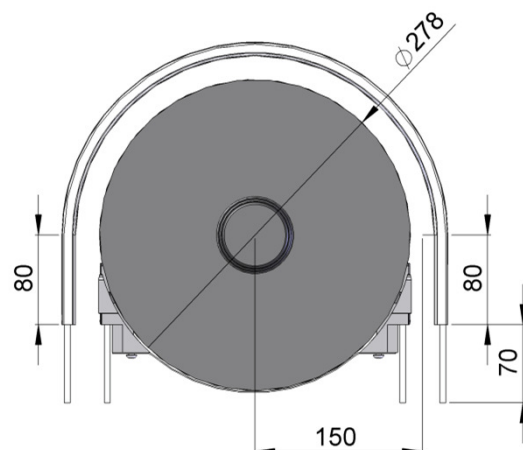
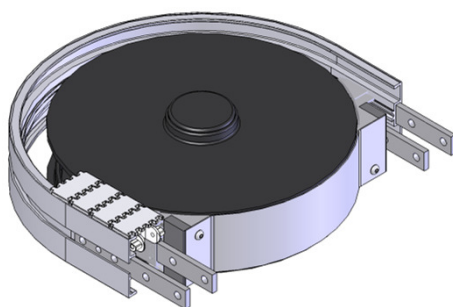
Slide rail required 2-way: 0

FK SERIES

FK

FK Wheel Bend 180°

FKWB-180R150A



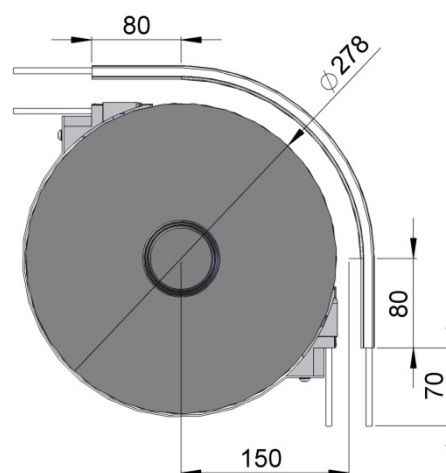
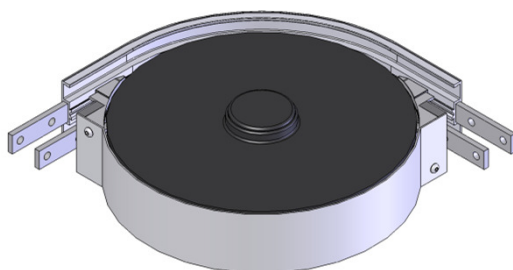
UOM : pc

Chain required 2-way : 1.3 meter

Slide rail required 2-way: 1.0 meter

FK Wheel Bend 90°

FKWB-90R150A



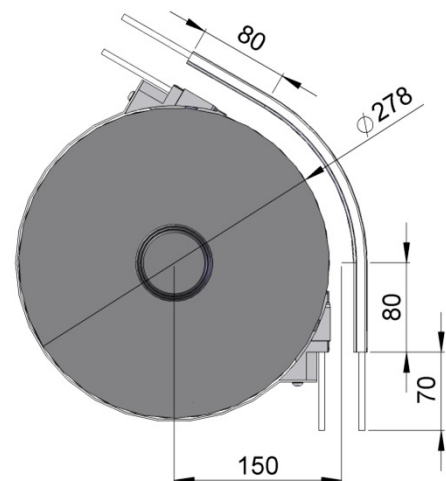
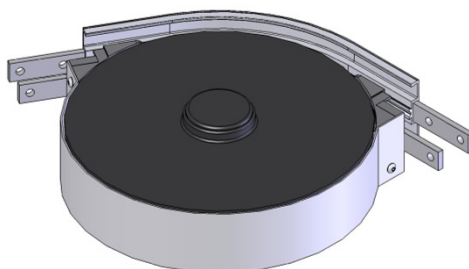
UOM : pc

Chain required 2-way : 0.8 meter

Slide rail required 2-way: 0.6 meter

FK Wheel Bend 60°

FKWB-60R150A



UOM : pc

Chain required 2-way : 0.7 meter

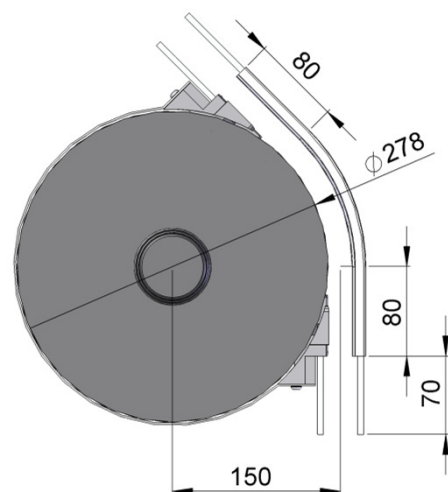
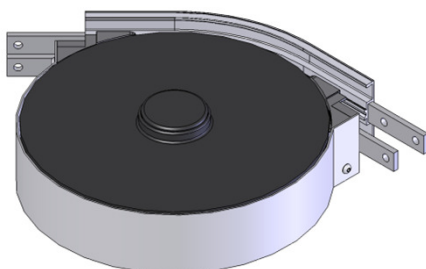
Slide rail required 2-way: 0.7 meter

FK SERIES

FK

FK Wheel Bend 45°

FKWB-45R150A



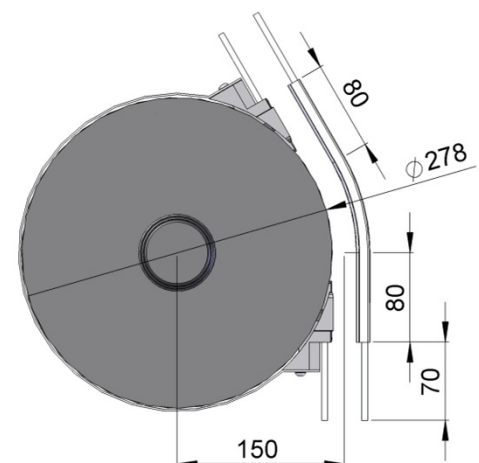
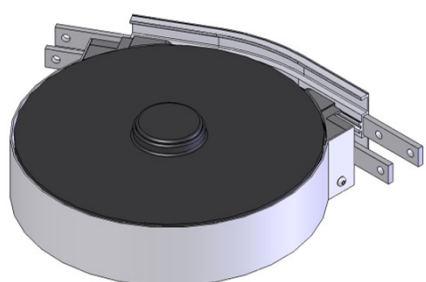
UOM : pc

Chain required 2-way : 0.6 meter

Slide rail required 2-way: 0.6 meter

FK Wheel Bend 30°

FKWB-30R150A



UOM : pc

Chain required 2-way : 0.5 meter

Slide rail required 2-way: 0.6 meter

FK Wheel Bend 5° - 180°

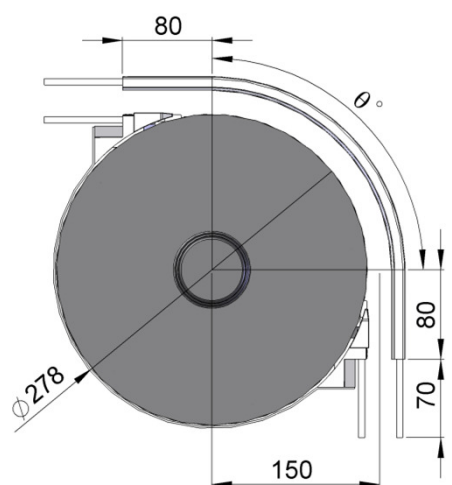
Example for FK Wheel Bend Ordering

Wheel bend, $\Theta^\circ \pm 1^\circ$

FKWB- Θ° R150A

If an angle of 65° is needed for wheel bend, so the ordering part number is

FKWB-65R150A

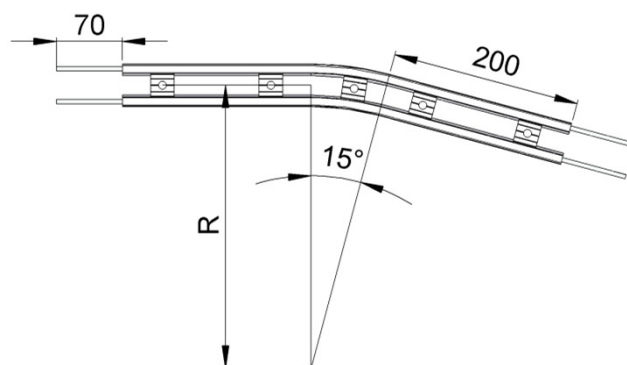
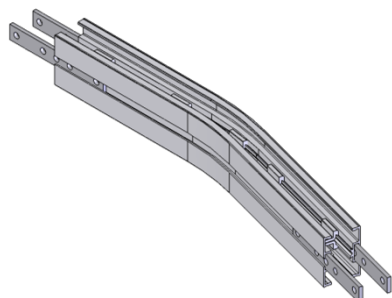


The outer bend is assembled using connecting strip (FACS-20x140) .Angle of Θ° must be indicated when ordering.

FK SERIES

FK

FK Horizontal Plain Bend 15°



UOM : pc

Chain required 2-way (300, 500, 700, 1000) : 1, 1.1, 1.2, 1.4 meter

Slide rail required 2-way(300, 500, 700, 1000): 2, 2.2, 2.4, 2.8 meter

Horizontal plain bend, 15° ± 1°

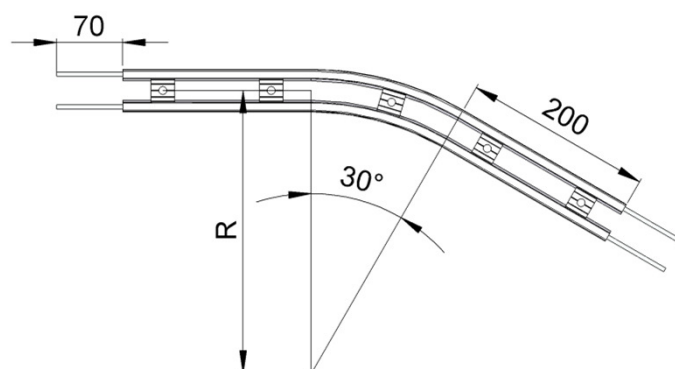
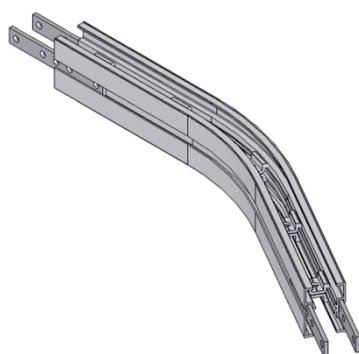
R = 300 ± 10mm **FKHB-15R300**

R = 500 ± 10mm **FKHB-15R500**

R = 700 ± 10mm **FKHB-15R700**

R = 1000 ± 10mm **FKHB-15R1000**

FK Horizontal Plain Bend 30°



UOM : pc

Chain required 2-way (300, 500, 700, 1000) : 1.2, 1.4, 1.6, 1.9 meter

Slide rail required 2-way(300, 500, 700, 1000): 2.4, 2.8, 3.2, 3.8 meter

Horizontal plain bend, 30° ± 1°

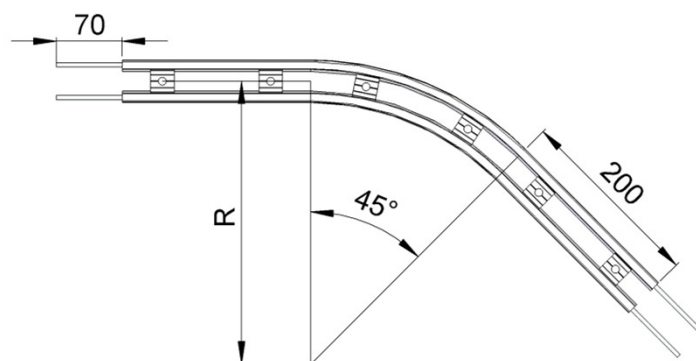
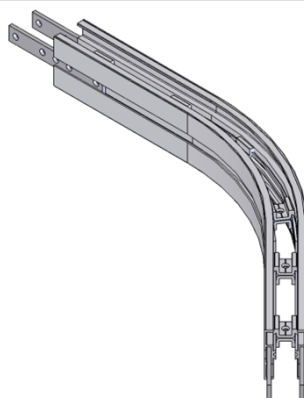
R = 300 ± 10mm **FKHB-30R300**

R = 500 ± 10mm **FKHB-30R500**

R = 700 ± 10mm **FKHB-30R700**

R = 1000 ± 10mm **FKHB-30R1000**

FK Horizontal Plain Bend 45°



UOM : pc

Chain required 2-way (300, 500, 700, 1000) : 1.3, 1.6, 1.9, 2.4 meter

Slide rail required 2-way(300, 500, 700, 1000): 2.5, 2.9, 3.3, 3.9 meter

Horizontal plain bend, 45° ± 1°

R = 300 ± 10mm **FKHB-45R300**

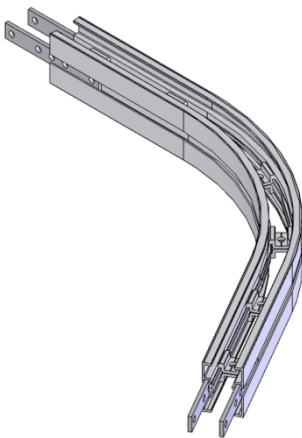
R = 500 ± 10mm **FKHB-45R500**

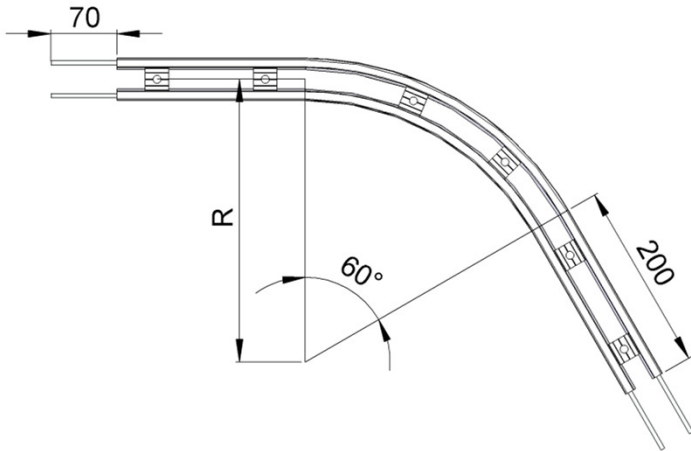
R = 700 ± 10mm **FKHB-45R700**

R = 1000 ± 10mm **FKHB-45R1000**

FK SERIES

FK Horizontal Plain Bend 60°





FK

UOM : pc

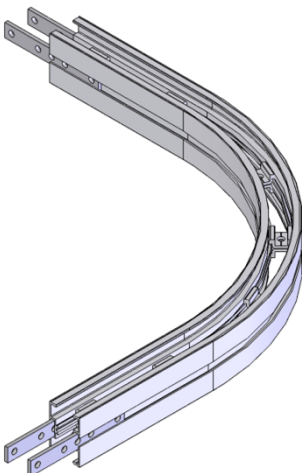
Chain required 2-way (300, 500, 700, 1000) : 1.5, 1.9, 2.3, 2.9 meter

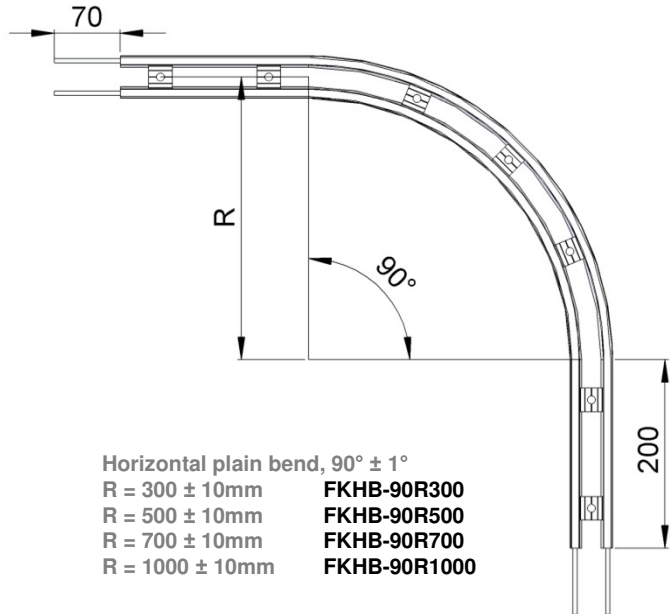
Slide rail required 2-way(300, 500, 700, 1000): 2.9, 3.7, 4.6, 5.8 meter

Horizontal plain bend, 60° ± 1°

R = 300 ± 10mm	FKHB-60R300
R = 500 ± 10mm	FKHB-60R500
R = 700 ± 10mm	FKHB-60R700
R = 1000 ± 10mm	FKHB-60R1000

FK Horizontal Plain Bend 90°





UOM : pc

Chain required 2-way (300, 500, 700, 1000) : 1.8, 2.4, 3.0, 4.0 meter

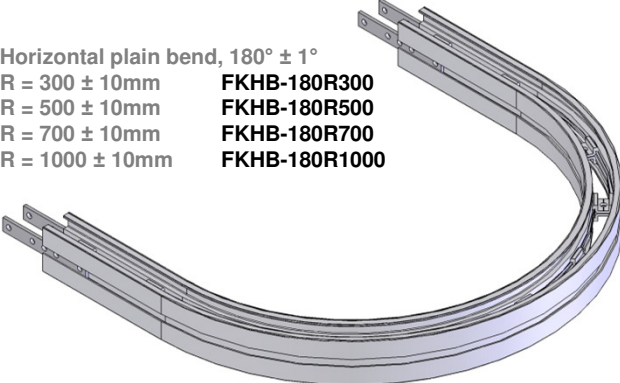
Slide rail required 2-way(300, 500, 700, 1000): 3.5, 4.8, 6.0, 8.0 meter

Horizontal plain bend, 90° ± 1°

R = 300 ± 10mm	FKHB-90R300
R = 500 ± 10mm	FKHB-90R500
R = 700 ± 10mm	FKHB-90R700
R = 1000 ± 10mm	FKHB-90R1000

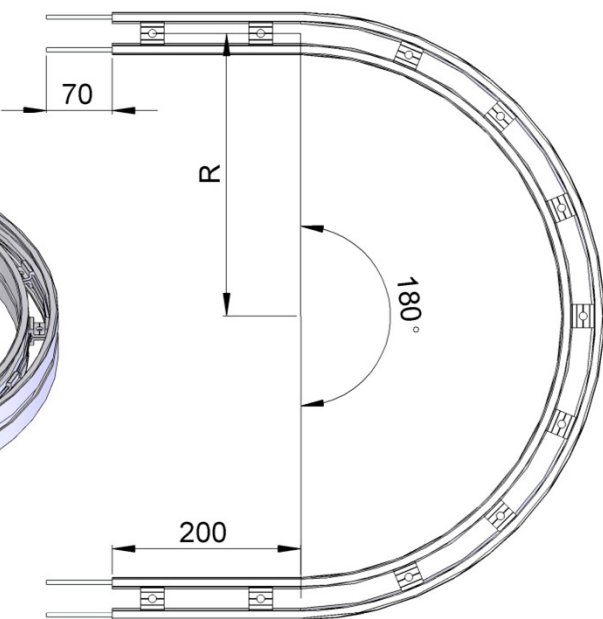
FK SERIES

FK Horizontal Plain Bend 180°



Horizontal plain bend, $180^\circ \pm 1^\circ$
 $R = 300 \pm 10\text{mm}$ **FKHB-180R300**
 $R = 500 \pm 10\text{mm}$ **FKHB-180R500**
 $R = 700 \pm 10\text{mm}$ **FKHB-180R700**
 $R = 1000 \pm 10\text{mm}$ **FKHB-180R1000**

UOM : pc
 Chain required 2-way (300, 500, 700, 1000) : 2.7, 4.0, 5.2, 7.1 meter
 Slide rail required 2-way(300, 500, 700, 1000): 5.4, 7.9, 1.1, 14.2 meter



FK

FK Horizontal Plain Bend 5-180°

Example for FK Horizontal Plain Bend Ordering

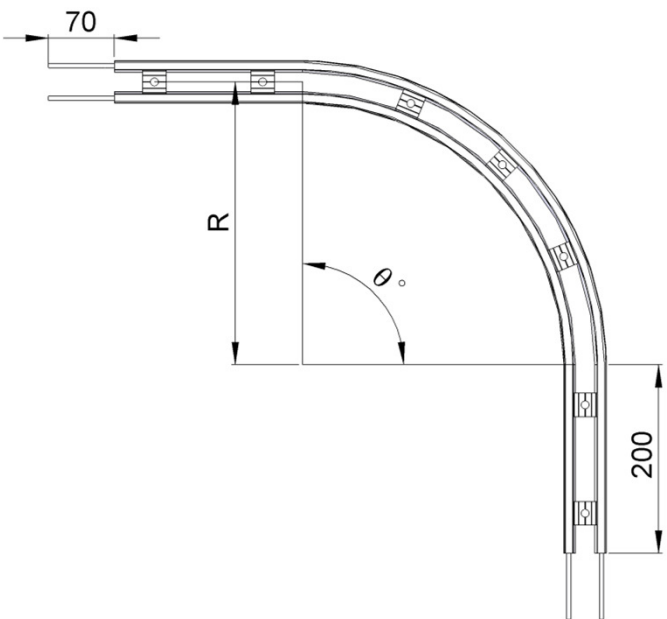
Horizontal plain bend, $\theta^\circ \pm 1^\circ$

$R = 300 \pm 10\text{mm}$ **FKHB- θ° R300**
 $R = 500 \pm 10\text{mm}$ **FKHB- θ° R500**
 $R = 700 \pm 10\text{mm}$ **FKHB- θ° R700**
 $R = 1000 \pm 10\text{mm}$ **FKHB- θ° R1000**

If an angle of 120° is needed for radius R500 horizontal plain bend, so the ordering part number is

FKHB-120R500

UOM : pc
 Chain required 2-way (300, 500, 700, 1000) : meter (variable to angle)
 Slide rail required 2-way(300, 500, 700, 1000): meter (variable to angle)

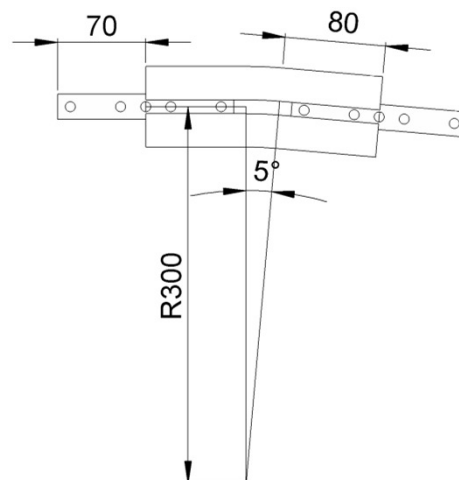
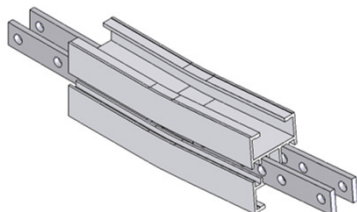


FK SERIES

FK

FK Vertical Bend 5°

FKVB-5R300



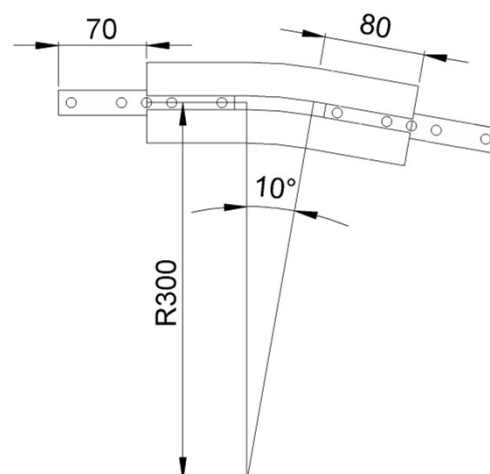
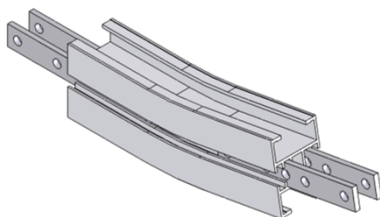
UOM : pc

Chain required 2-way : 0.4 meter

Slide rail required 2-way: 0.8 meter

FK Vertical Bend 10°

FKVB-10R300



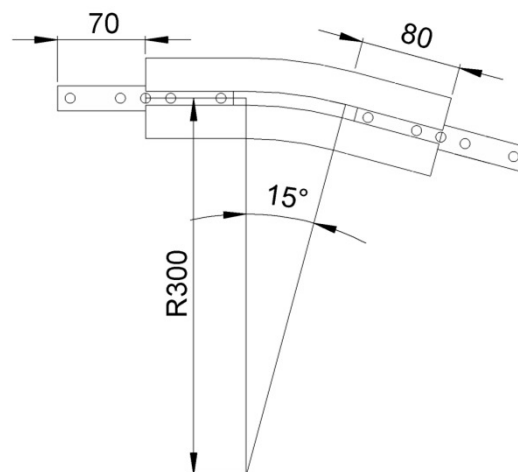
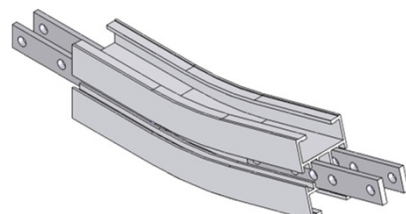
UOM : pc

Chain required 2-way : 0.5 meter

Slide rail required 2-way: 0.9 meter

FK Vertical Bend 15°

FKVB-15R300

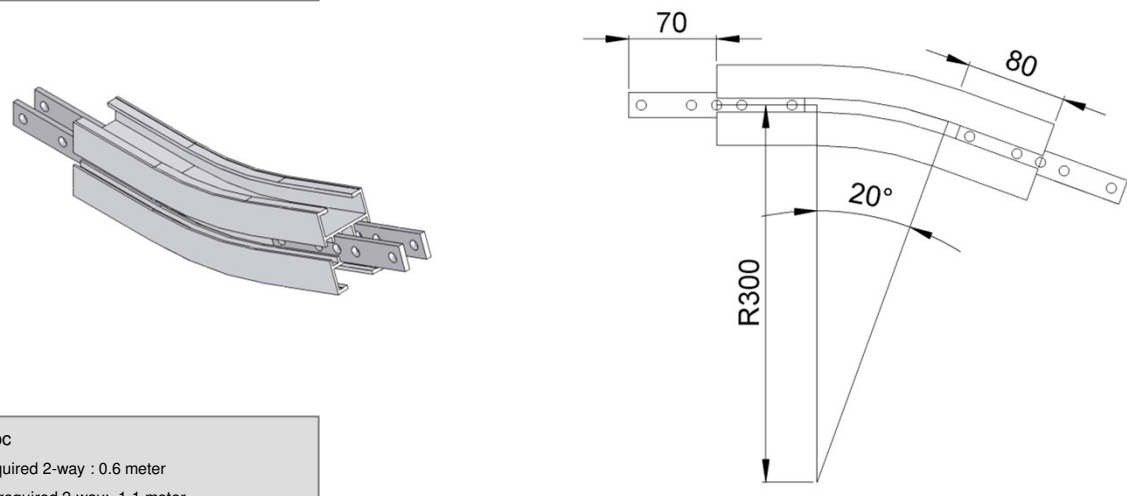


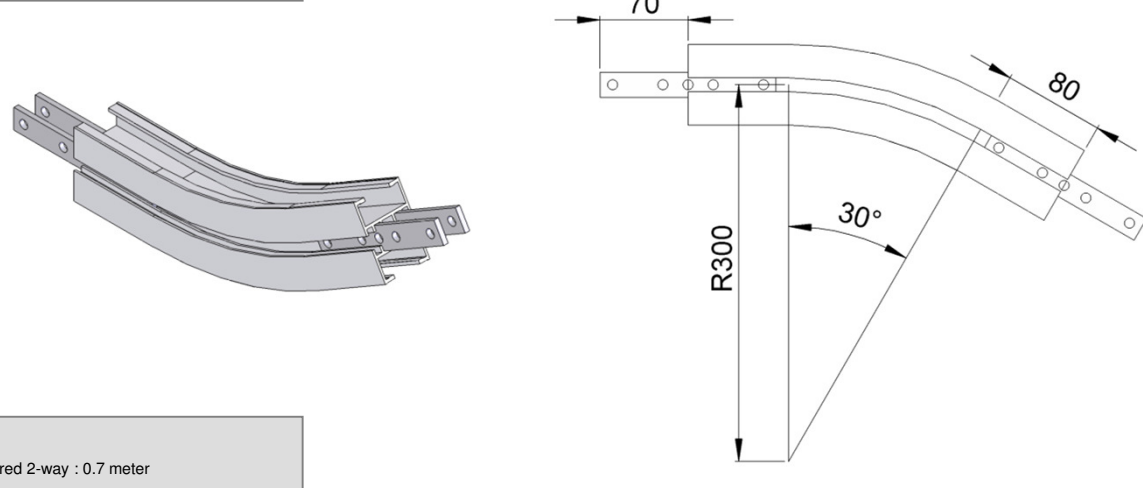
UOM : pc

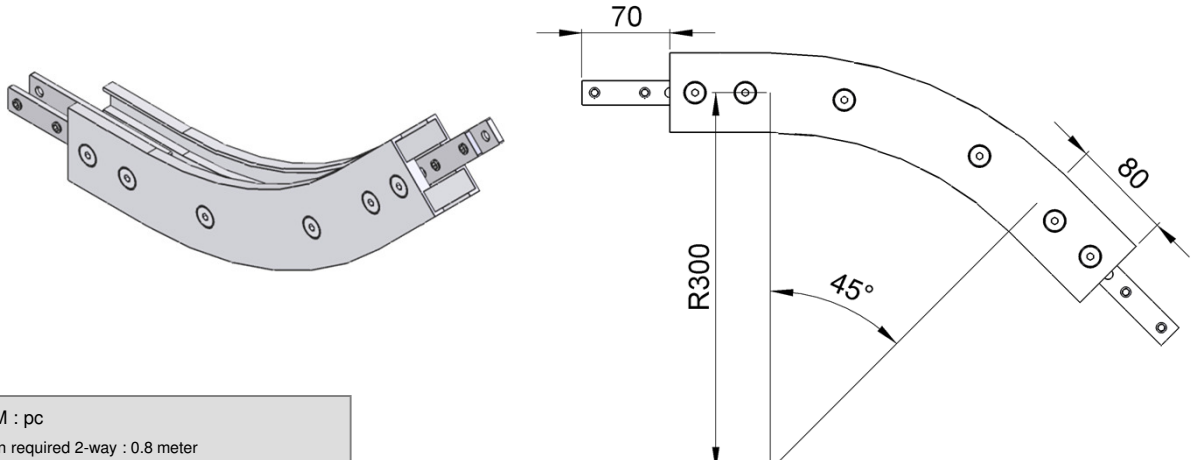
Chain required 2-way : 0.5 meter

Slide rail required 2-way: 1.0 meter

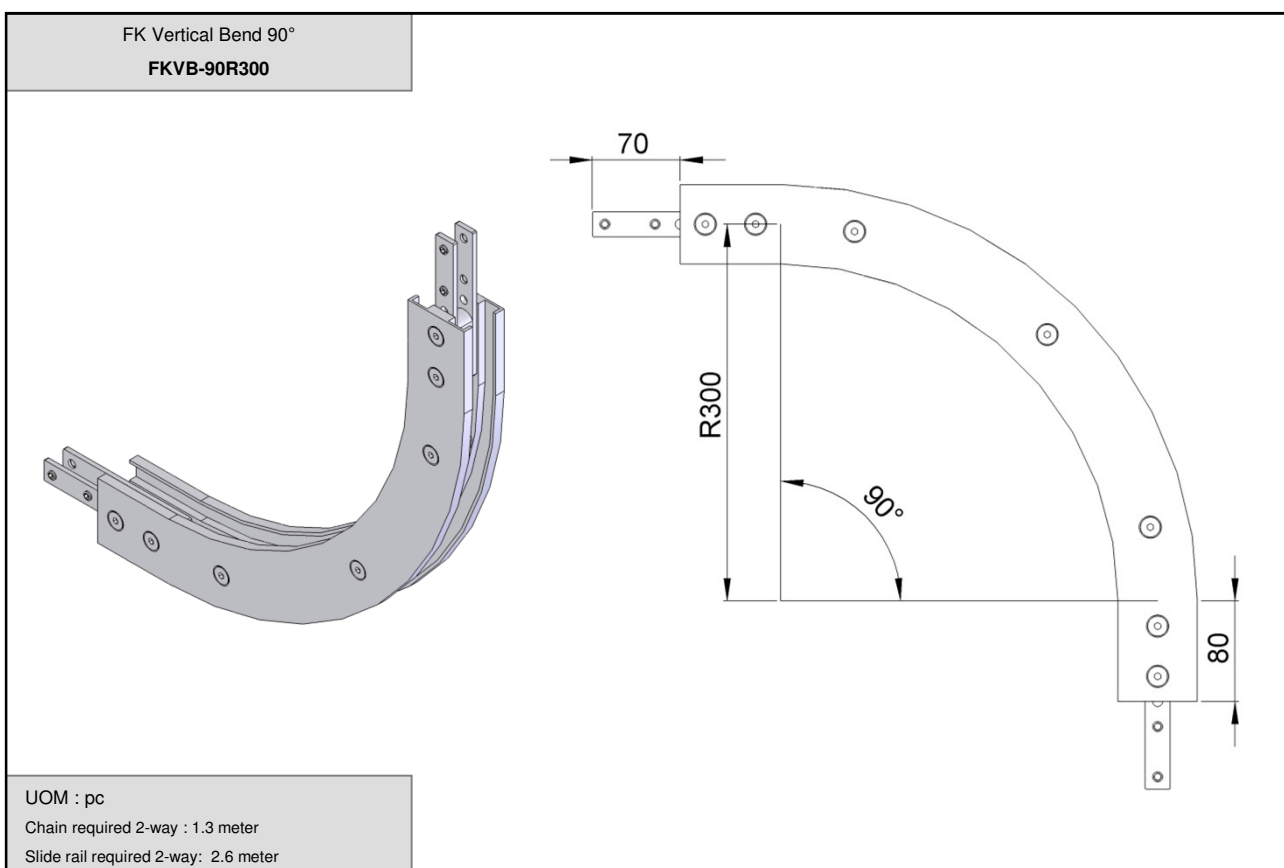
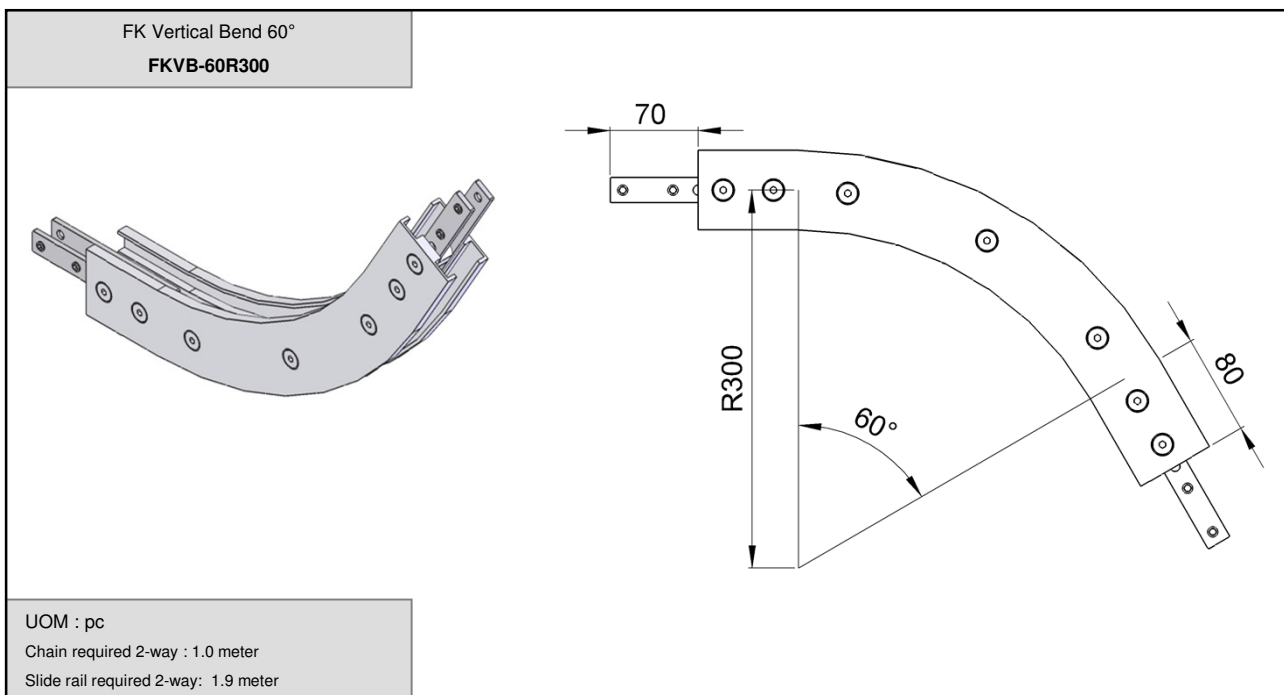
FK SERIES

<p>FK Vertical Bend 20° FKVB-20R300</p>		<p>FK</p>
<p>UOM : pc Chain required 2-way : 0.6 meter Slide rail required 2-way: 1.1 meter</p>		

<p>FK Vertical Bend 30° FKVB-30R300</p>	
<p>UOM : pc Chain required 2-way : 0.7 meter Slide rail required 2-way: 1.3 meter</p>	

<p>FK Vertical Bend 45° FKVB-45R300</p>	
<p>UOM : pc Chain required 2-way : 0.8 meter Slide rail required 2-way: 1.6 meter</p>	

FK SERIES



FK SERIES

FK Vertical Bend 5° - 90°

Example for FK Vertical Bend Ordering

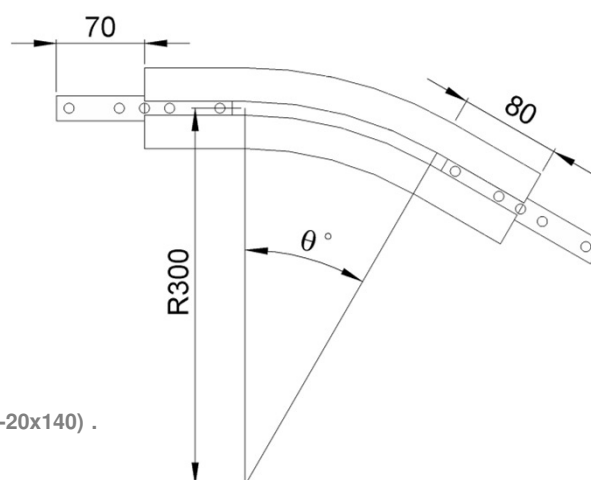
Vertical bend, $\Theta^\circ \pm 1^\circ$

FKVB- Θ° R300

If an angle of 65° is needed for vertical bend, so the ordering part number is

FKVB-65R300

The outer bend is assembled using connecting strip (FACS-20x140) .
Angle of Θ° must be indicated when ordering.



FK