

Conveyor Components



October 2012



EMERSON
Industrial Automation

EMERSON. CONSIDER IT SOLVED.™



The best of conveyor components!

Conveyor Line Conveyor Line is the name given to the widest product line bearing the System Plast name and it includes an infinite number of components for the setting up of automated goods handling systems.

All that is necessary where quality is concerned.

The almost limitless choice and innovative solutions offered make it possible to arrange systems suitable for the most diverse production requirements.

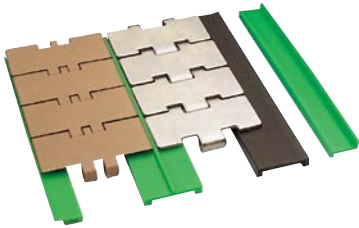
The material used can withstand particular difficult working conditions, and the structural simplicity of each component facilitates the procedures of sanitification of an entire plant.

Drive sprockets, return parts, guides, clamps and every kind of brackets, are all produced according to the strict System Plast standard which has for years guaranteed maximum quality throughout the world.

Conveyor Components

CHAIN GUIDE PROFILES

POLYETHYLENE WEAR STRIPS



CHAIN RETURN COMPONENTS

ROLLERS

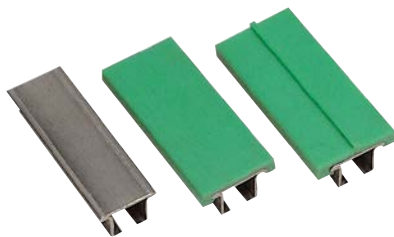


CORNER TRACKS

878 TAB • 879TAB 880 TAB • 881TAB



CHAIN GUIDE PROFILES



WATERTIGHT ROLLERS



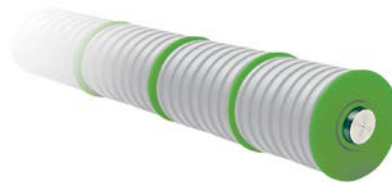
879 • 880 • 881



ACCESSORIES FOR PROFILES



ROLLERS WITH RUBBER TOP



882TAB • LBP 882 TAB



ACCESSORIES FOR PROFILES



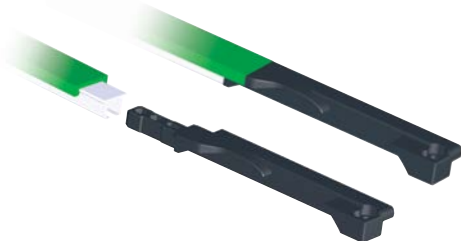
SERPENTINE GUIDES



882 BEVEL



SIDE TRANSFER GUIDE SHOES



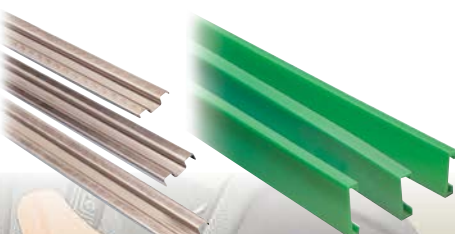
EXPANSION PLUGS



1863 • 1873 • 1874



CHAIN GUIDE PROFILES



SHOES



MAGNETIC CORNER TRACKS



Conveyor Components

STRAIGHT SECTIONS

**878 TAB • 879TAB
880 TAB • 881TAB**



SIDE GUIDES

CONICAL SIDE GUIDES



CLAMPS

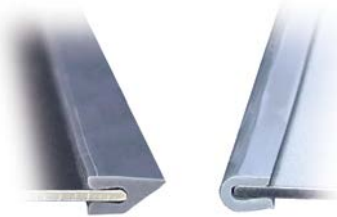
**FOR CONICAL
SIDE GUIDES**



878 • 880 • 881



NECK GUIDE RAILS



**FOR CONICAL
SIDE GUIDES**



882 TAB • LBP 882 TAB



STANDARD SIDE GUIDES



**FOR STANDARD
SIDE GUIDE**



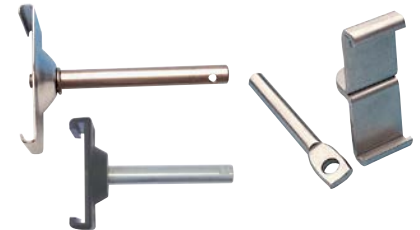
882 BEVEL



SIDE GUIDES



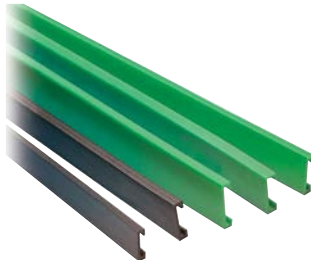
FOR SIDE GUIDES



1863 • 1873 • 1874



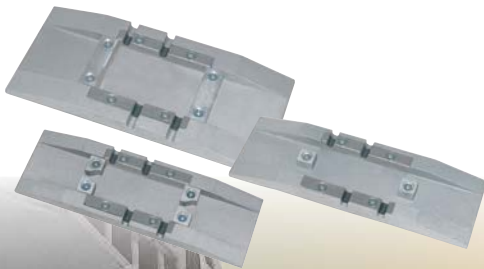
SIDE GUIDES



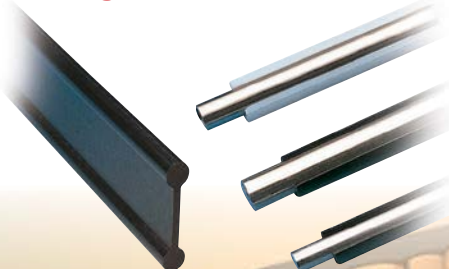
FOR ROUND PROFILES



CHAIN MOUNTING BLOCKS



SIDE GUIDES



FOR ROUND PROFILES



Conveyor Components

ROLLER SIDE GUIDES

FLEXIBLE ROLLER MODULES



SIDE BRACKETS

SIDE PLOW FOR VALU GUIDE COMBINERS

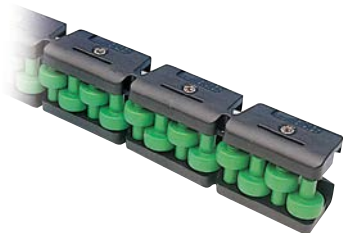


SIDE BRACKETS ACCESSORIES

SIDE BRACKETS in stainless steel



FLEXIBLE ROLLER MODULES



MODULAR TRANSFER PLATES



SIDE BRACKETS in stainless steel



FLEXIBLE INTERMEDIARY ROLLER MODULES



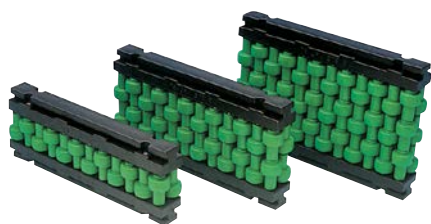
FIXED SIDE BRACKETS with eyebolt



ADJUSTABLE HEADS



INTERMEDIARY ROLLER MODULES



ADJUSTABLE SIDE BRACKETS



DUAL ACTION ADJUSTABLE HEADS



INTERMEDIARY ROLLER GUIDES



SIDE BRACKETS WITH LEVER



SPACERS FOR BRACKETS



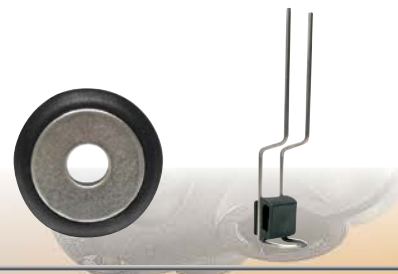
ACCESSORIES



SPEEDSET



DRIP TRAY SUPPORTS



Conveyor Components

CONNECTING CLAMPS

CROSS BLOCKS



FRAME SUPPORT COMPONENTS

SIDE MOUNTING BRACKETS



MISCELLANEOUS

HANDLES • HINGES



CROSS BLOCKS



SUPPORT HEADS



CONNECTING JOINTS



EXTRA CROSS BLOCKS



SIDE MOUNTING TOP BRACKETS



ADJUSTABLE HANDLES



BRACKETS



EXPANSION PLUGS for round and square tubes



PROFILE CLAMPS FOR TUBES



CLAMP FOR PHOTOCELLS OR REFLECTORS



THREADED TUBE ENDS



ACCESSORIES



PHOTOCELL ACCESORIES



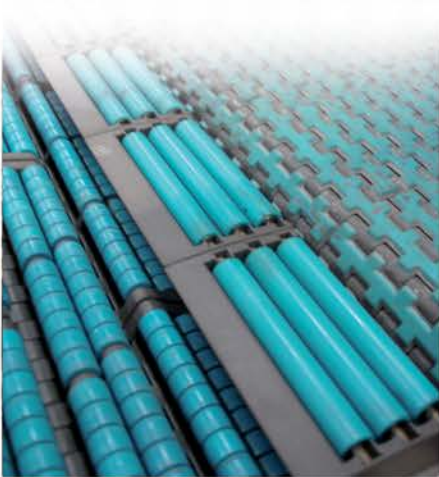
SUPPORT BASES




CABLE CARRIER CHAINS




Application Examples







 **System Plast - USA**
Tel. 866 765 8744 - Fax 866 447 6587
CustomerService.PTSolutions@Emerson.com

 **System Plast S.r.l. - ITALY**
Tel. 035 83 51 301 - Fax 035 83 51 406
info@systemplast.com

 **System Plast - GERMANY**
Tel. (03529) 56 15 0 - Fax (03529) 51 13 67
info@fspchains.com


 **System Plast - GERMANY**
Sales Office - Tel. (06204) 9673 0 - Fax (06204) 9673 29
info-de@systemplast.com

 **System Plast - FRANCE**
Tel. (01) 64 66 05 48 - Fax (01) 64 66 05 82
info-fr@systemplast.com

 **System Plast International - THE NETHERLANDS**
Tel. (0186) 63 61 21 - Fax (0186) 63 61 25
info-nl@systemplast.com

 **System Plast - UK**
Tel. (01926) 614 314 - Fax (01926) 614 914
info-uk@systemplast.com

 **System Plast - MEXICO**
Tel. (033) 3284 5629
servicioclientes@emerson.com

 **System Plast - BRAZIL**
Tel. (011) 3618 6699 - Fax (011) 3618 6633
info-br@systemplast.com

 **System Plast - SINGAPORE**
Tel. (65) 6891 7600 - Fax (65) 6873 7882
systemplast.sg@emerson.com

 **System Plast - CHINA**
Tel. (86) 596 2109921 - Fax (86) 596 2136004
sales.zz@emerson.com

System Plast™ Catalogues available on request
*Our complete range of components will cover
all your productive needs*

Conveyor
Chains / Belts



Conveyor
Components



Bearing
Supports



Leveling
Pads



Engineering
Manual



Interactive
CD ROM



System Plast worldwide!
Local Commitment, Global Presence

System Plast can reach you everywhere with fast shipments of
standard or customized products.
Find our agent or representative closest to you.



Emerson Industrial Automation Power Transmission Solutions

Corporate Headquarters

7120 New Buffington Road
Florence, KY 41042

www.systemplast.com
www.emerson-ept.com



EMERSON™
Industrial Automation

Conveyor Components Brochure MCB12036E • Form 22410E

APPLICATION CONSIDERATIONS

The proper selection and application of power transmission products and components, including the related area of product safety, is the responsibility of the customer. Operating and performance requirements and potential associated issues will vary appreciably depending upon the use and application of such products and components. The scope of the technical and application information included in this publication is necessarily limited. Unusual operating environments and conditions, lubrication requirements, loading supports, and other factors can materially affect the application and operating results of the products and components and the customer should carefully review its requirements. Any technical advice or review furnished by Emerson Power Transmission Corporation and its divisions with respect to the use of products and components is given in good faith and without charge, and Emerson assumes no obligation or liability for the advice given, or results obtained, all such advice and review being given and accepted at customer's risk.

For a copy of our Standard Terms and Conditions of Sale, Disclaimers of Warranty, Limitation of Liability and Remedy, please contact Emerson Power Transmission Customer Service at 1-800-626-2120. These terms and conditions of sale, disclaimers and limitations of liability apply to any person who may buy, acquire or use an Emerson Power Transmission Corporation product referred to herein, including any person who buys from a licensed distributor of these branded products.

Emerson Power Transmission does not warrant the accuracy of the information contained in this document. All interchanges should be compared with actual current specifications and/or manufacturing drawings. For a copy of our standard terms and conditions, contact Emerson Power Transmission at 1-800-626-2120.

Emerson, Emerson. Consider It Solved., Emerson Industrial Automation and System Plast are trademarks of Emerson Electric Co. or one of its affiliated companies.

© 2012 Emerson Power Transmission Corp., All Rights Reserved.
MCB12036E • Form 22410E